

AIRFLOW

ROTARY BLOWER



Principles and Construction of Rotary Blower

A blower will be used when a large quantity of air is required at normal pressure 0.1-0.5 kg/cm²G or so. HD Rotary Blower's structure is exquisite, it mainly consists of motor, air filter, blower body, air chamber, base (and oil tank) and oil dropping nozzle. The blower is so designed and constructed that air is sucked, compressed and discharged repeatedly while vanes protruding from the grooves of rotor are coming in and out by revolution of a rotor (rotating body) set eccentrically inside the cylinder diameter. A minimum required quantity of oil is dropped to an oil dropping nozzle, the dropped into the cylinder always while operating in order to make lubrication for the purpose of preventing heat and noise from generation. In the same time, circumfluence of air in cylinder is avoided.

Application

- Wastewater aeration.
- Mixing and aerating of hospital and laboratory waste products.
- Conveying papers in offset printing operations.
- Agitation and aeration for plating and waste water.
- Air supplier for plastic welding and blowing.
- For mist spray of burner and in glass industry and others.

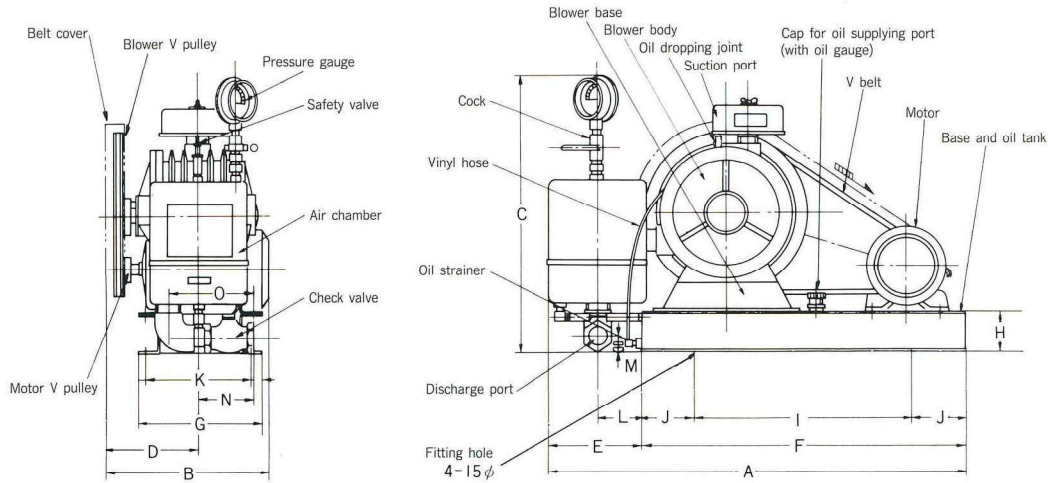
Features

- Compact, powerful air flowrate, low noise and economical energy consumption. (It adopts the principle of air compressed by revolving movement. Therefore, although compact, the rotary blowers display their powerful discharged capacity, low noise, little energy consumption that can't be surpassed by other competitors.)
- Stable operation, simple installation. (In the case of small types, the blower can be conveniently installed and mere vibration produced if placed correctly, not requiring any other anti-vibration device.)
- Resisting load changes, securing fixed air flowrate (For instance, if a rotary blower is used for sanitary treatment in the aeration tank, almost no air flowrate is decreased even if load becomes large due to the change in the pressure inside tank.)
- Air chamber equipped for dispersing air smoothly. (All models are provided with an air chamber, resulting in being free from air pulsation and air dispersed smoothly.)
- Superior material, ingenious structure, remarkable performance. (All parts of the blowers are made of superior material and are fine designed and manufactured. It is durable in use and free of trouble and deterioration of performance after a long time use.)
- Simple maintenance, rare malfunctions, long using life. (The low speed of blower ensures small abrasion and long life.)

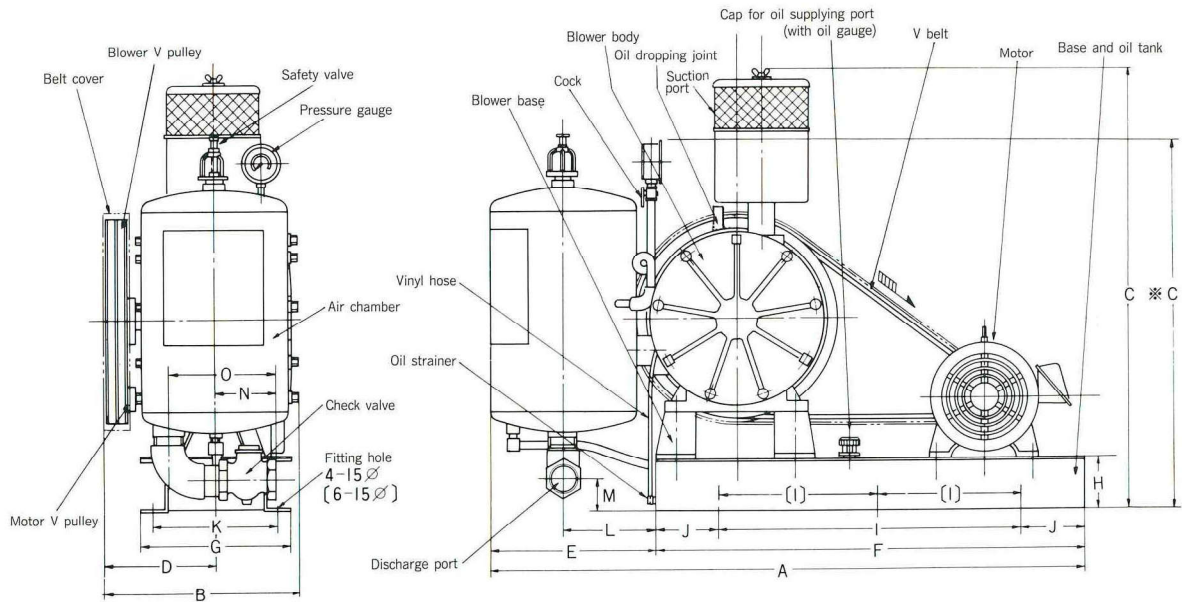
Performance Parameters

Type	Output (in.)	Power		Freq. (Hz)	RPM	Air Flowrate (m ³ /min)					V Pulley		V belt	Oil Capacity (L)	Weight (kg)
		HP	kW			0.1kgf/cm ² G	0.2kgf/cm ² G	0.3kgf/cm ² G	0.4kgf/cm ² G	0.5kgf/cm ² G	Blower	Motor			
HD-251s	3/4"	0.50	0.37	50	450	0.31	0.30	0.29	0.28	0.28	8"	2"1/2	A-40	1.5	53.0
HD-30s	1"	0.50	0.37	50	430	0.35	0.34	0.33	0.32	0.31	10"	3"	A-44	1.5	59.0
HD-301s	1"	1.00	0.75	50	520	0.42	0.41	0.40	0.39	0.38	10"	3"1/2	A-44	1.5	59.0
HD-301H	1"	1.00	0.75	50	650	0.52	0.51	0.50	0.49	0.48	8"	4"	A-41	1.5	59.0
HD-40s	1"1/4	1.00	0.75	50	500	0.66	0.65	0.63	0.61	0.59	12"	4"	A-52	2.5	90.0
HD-401s	1"1/4	2.00	1.50	50	580	0.80	0.77	0.74	0.71	0.67	12"	4"1/2	A-52	2.5	95.0
HD-50s	1"1/2	2.00	1.50	50	430	1.14	1.12	1.09	1.06	1.02	14"	4"	A-64	3.5	132.0
HD-501s	1"1/2	3.00	2.20	50	500	1.44	1.42	1.39	1.36	1.32	14"	4"1/2	A-64	3.5	137.0
HD-60s	2"	3.00	2.20	50	450	1.90	1.87	1.82	1.77	1.71	16"	5"	B-74	5.5	225.0
HD-601s	2"	5.00	3.70	50	540	2.41	2.34	2.29	2.24	2.18	16"	6"	B-74	5.5	235.0
HD-80s	2"1/2	5.00	3.70	50	430	2.82	2.74	2.66	2.59	2.50	18"	5"1/2	B-84	8.0	270.0
HD-801s	2"1/2	5.00	3.70	50	500	3.53	3.45	3.38	3.33	3.25	18"	6"	B-84	8.0	295.0
HD-100s	3"	7.50	5.50	50	390	4.32	4.28	4.25	4.18	4.11	20"	5"1/2	B-93	20.0	397.0

Installation Dimensions



Type	A	B	C	D	E	F	G	H	I	J	K	L	M	N	O	P
HD-251s	710	255	445	145	200	510	170	80	410	50	130	120	30	65	115	0.75
HD-30s	690	255	450	145	180	510	170	80	410	50	130	100	30	80	130	1.00
HD-301s	730	265	450	150	180	510	170	80	410	50	130	100	30	80	130	1.00
HD-301H	730	265	450	150	180	510	170	80	410	50	130	100	30	80	130	1.00
HD-40s	795	305	500	190	170	600	230	80	400	100	190	80	40	100	155	1.25
HD-401s	800	310	500	190	170	600	230	80	400	100	190	80	40	100	155	1.25
HD-50s	1010	345	600	213	210	800	265	80	600	100	225	100	90	90	160	1.50
HD-501s	1010	350	600	218	210	800	265	80	600	100	225	100	90	90	160	1.50



[] : HD-100s, HD-1001s

Type	A	B	C	D	E	F	G	H	I	J	K	L	M	N	O	P
HD-60s	1180	385	730	230	330	800	300	100	600	125	260	185	60	95	185	2.00
HD-601s	1380	390	730	235	330	850	300	100	600	125	260	185	60	95	185	2.00
HD-80s	1325	440	870	260	325	1000	350	100	700	150	310	180	65	140	235	2.50
HD-801s	1325	445	870	265	325	1000	350	100	700	150	310	180	65	140	235	2.50
HD-100s	1520	555	955	320	420	1100	470	100	400	150	410	245	70	150	270	3.00