



# APEC-SUN

Centrifugal Pump Close Coupled



## **APPLICATIONS:**

- Water and clean liquids not chemically aggressive handling.
- Water supply.
- Water circulation in air-conditioning systems.
- Washing and industrial plants.
- Pressure boosting.
- Irrigation and agriculture.

## **TECHNICAL DETAILS:**

- Highly resistant construction.
- Impeller in stainless steel.
- High efficiency.

## **PUMP**

- Maximum working pressure: 10 bar.
- Maximum liquid temperature: 90 °C.
- MEI > 0.4 for 2 poles and MEI > 0.1 for 4 poles.

## **MOTOR**

- High efficiency IE2 motors starting from 0.75kW.  
High efficiency IE3 motors starting from 7.5kW up to 22kW.
- Self-ventilated 2 and 4 poles asynchronous motor.
- Insulation class F (B for high temperatures).
- Protection degree IP55.
- 230/440 (up to 4kW included) three phase 50Hz.  
400/690V (from 5.5kW and above) three phase 50Hz.
- Protection is user's responsibility.

## MATERIALS:

### PUMP

- Cast iron EN-GJL-250-EN 1561.

### IMPELLER

- AISI 304 for AMBF SERIES 32, 40, 50.
- AISI 316 microcasted for AMBF SERIES 65.

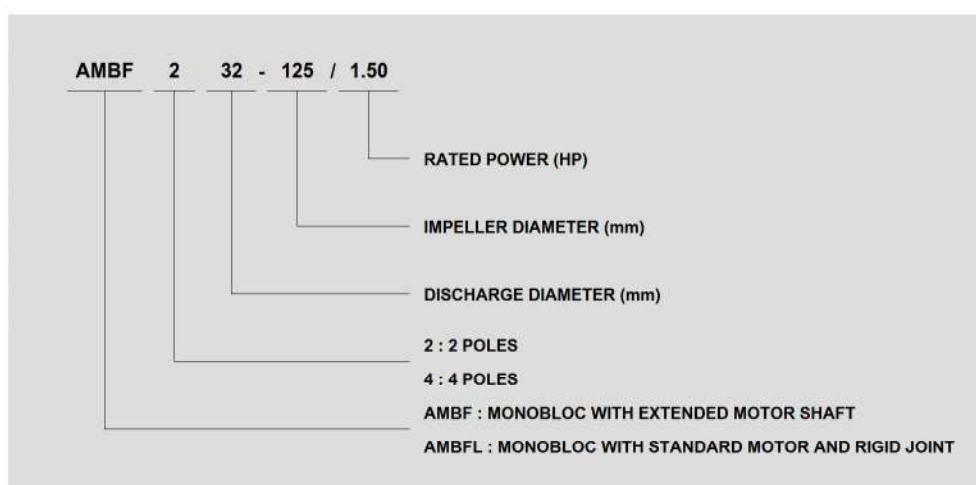
### SHAFT

- AISI 304 (part in contact with the liquid).

### MECHANICAL SEAL

- Ceramic / Carbon / NBR.

## TYPE DESCRIPTION:



## PERFORMANCE PARAMETER (2 POLES):

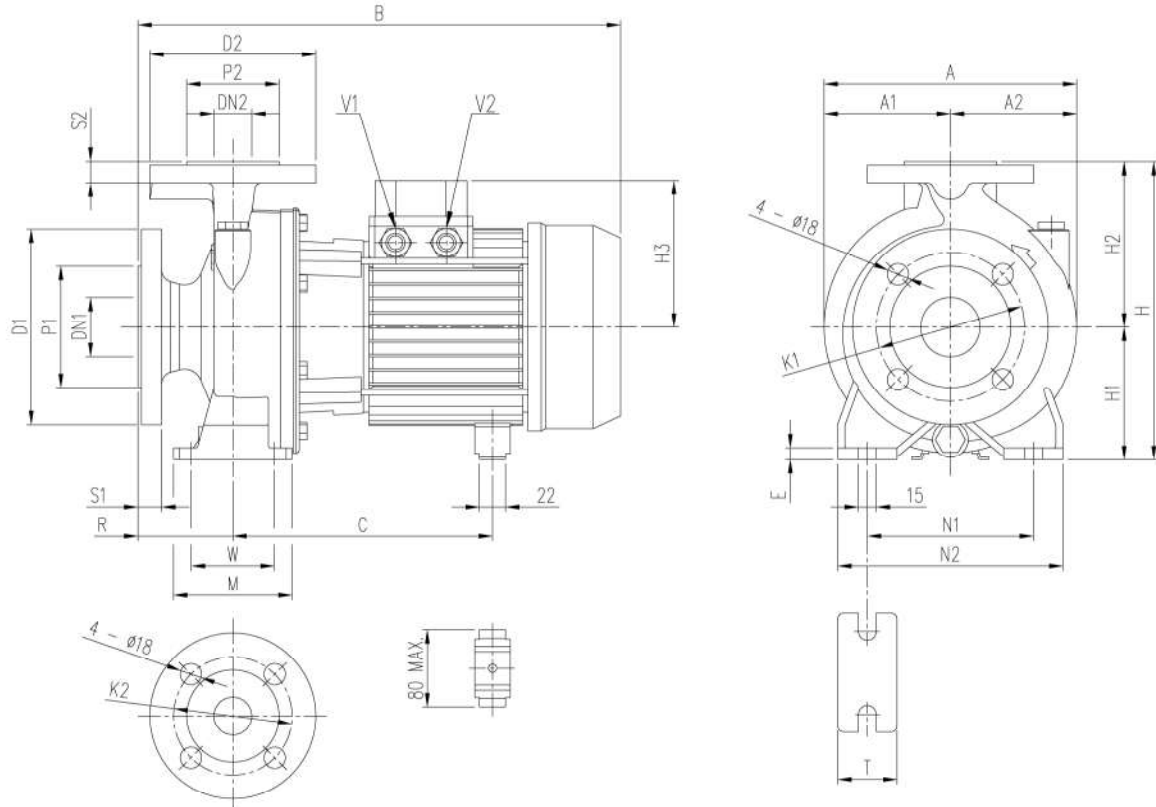
PUMP MODEL	POWER		CAPACITY (l/min)								
			100	150	200	250	300	333	360	400	450
	KW	HP	HEAD (m)								
AMBF 232-125/1.50	1.10	1.50	22.4	21.2	19.3	17.1	14.4	12.5	-	-	-
AMBF 232-160/2.00	1.50	2.00	27.5	25.9	23.7	21.3	18.5	16.4	-	-	-
AMBF 232-160/3.00	2.20	3.00	35.4	34.1	32.2	29.8	27.3	25.5	-	-	-
AMBF 232-200/4.00	3.00	4.00	43.0	41.0	39.0	36.5	33.0	31.0	-	-	-
AMBF 232-200/5.50	4.00	5.50	52.5	51.0	49.0	46.0	43.0	41.0	39.0	-	-
AMBF 232-200/10.00	7.50	10.00	67.0	65.0	63.0	61.0	57.0	55.0	53.0	50.0	46.0

PUMP MODEL	POWER		CAPACITY (l/min)								
			200	250	300	350	400	450	500	600	700
	KW	HP	HEAD (m)								
AMBF 240-125/2.00	1.50	2.00	18.2	17.6	16.8	15.9	14.8	13.7	12.4	9.6	6.3
AMBF 240-125/3.00	2.20	3.00	24.4	23.9	23.2	22.4	21.4	20.4	19.2	16.5	13.7
AMBF 240-160/4.00	3.00	4.00	29.4	28.7	27.8	26.8	25.8	24.8	23.7	21.4	18.7
AMBF 240-160/5.50	4.00	5.50	37.2	36.5	35.7	34.8	33.8	32.8	31.8	29.5	27.0
AMBF 240-200/7.50	5.50	7.50	44.5	44.0	43.0	42.0	41.0	40.0	39.0	36.3	33.0
AMBF 240-200/10.00	7.50	10.00	53.5	53.0	52.0	51.5	50.5	49.5	48.5	46.0	43.0
AMBF 240-200/15.00	11.00	15.00	70.0	69.0	68.5	67.5	67.0	66.0	65.0	63.0	60.0

PUMP MODEL	POWER		CAPACITY (l/min)								
			400	500	600	700	800	900	1000	1100	1200
	KW	HP	HEAD (m)								
AMBF 250-125/3.00	2.20	3.00	18.0	17.0	15.7	14.2	12.6	10.9	9.0	-	-
AMBF 250-125/4.00	3.00	4.00	21.5	20.8	19.8	18.5	17.1	15.5	13.8	12.0	10.0
AMBF 250-125/5.50	4.00	5.50	25.8	25.3	24.5	23.5	22.2	20.7	19.0	17.2	15.3
AMBF 250-160/7.50	5.50	7.50	32.0	31.5	30.5	29.3	27.9	26.2	24.4	22.4	20.0
AMBF 250-160/10.00	7.50	10.00	38.2	37.6	36.9	35.8	34.5	32.9	30.9	28.9	26.7
AMBF 250-200/12.50	9.20	12.50	-	49.5	48.0	46.5	44.5	42.5	40.0	37.6	34.4
AMBF 250-200/15.00	11.00	15.00	-	55.5	54.5	52.5	51.0	49.0	47.0	44.5	42.0
AMBF 250-200/20.00	15.00	20.00	-	69.5	68.5	67.0	65.5	63.5	61.5	59.0	56.0

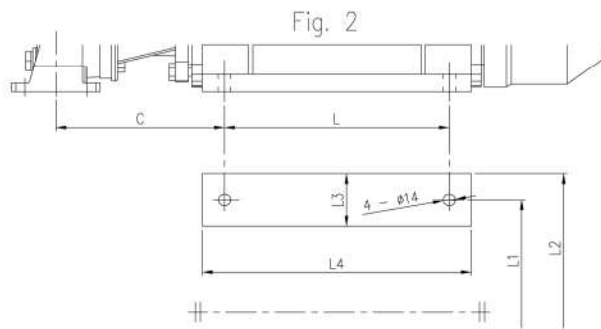
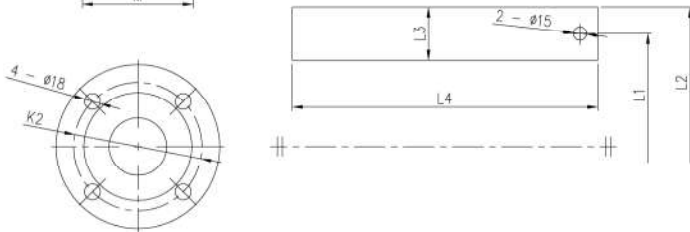
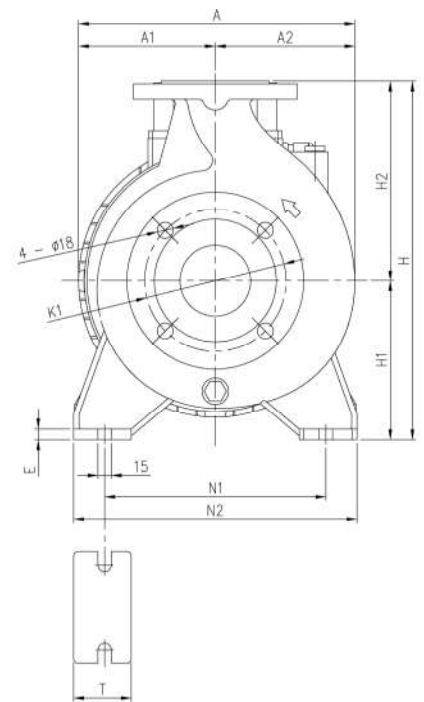
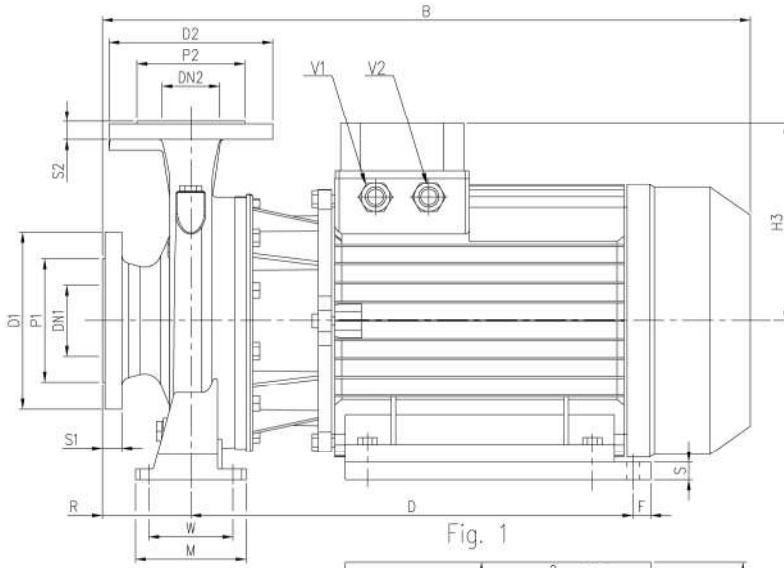
PUMP MODEL	POWER		CAPACITY (l/min)								
			600	700	1000	1300	1600	1900	2100	2200	2300
	KW	HP	HEAD (m)								
AMBF 265-125/5.50	4.00	5.50	20.4	19.8	17.2	14.0	10.4	6.0	-	-	-
AMBF 265-125/7.50	5.50	7.50	-	25.0	22.5	19.4	15.5	11.0	8.0	-	-
AMBF 265-125/10.00	7.50	10.00	-	29.6	27.5	24.7	21.5	17.8	14.7	13.0	-
AMBF 265-160/10.00	7.50	10.00	-	29.0	26.6	23.5	19.8	15.5	12.3	-	-
AMBF 265-160/12.50	9.20	12.50	-	34.7	32.4	29.6	26.3	22.2	18.8	17.0	-
AMBF 265-160/15.00	11.00	15.00	-	39.0	37.0	34.0	31.0	27.0	23.0	22.0	20.0
AMBF 265-160/20.00	15.00	20.00	-	46.0	44.0	41.5	38.4	34.6	31.9	30.5	29.0
AMBF 265-200/20.00	15.00	20.00	-	51.0	47.0	43.0	38.6	33.3	29.2	27.0	-
AMBF 265-200/25.00	18.50	25.00	-	58.0	55.0	51.0	47.0	41.5	37.9	35.9	33.6
AMBF 265-200/30.00	22.00	30.00	-	65.5	62.5	58.5	54.5	49.5	46.0	44.5	42.5

### DIMENSION (2 POLES):



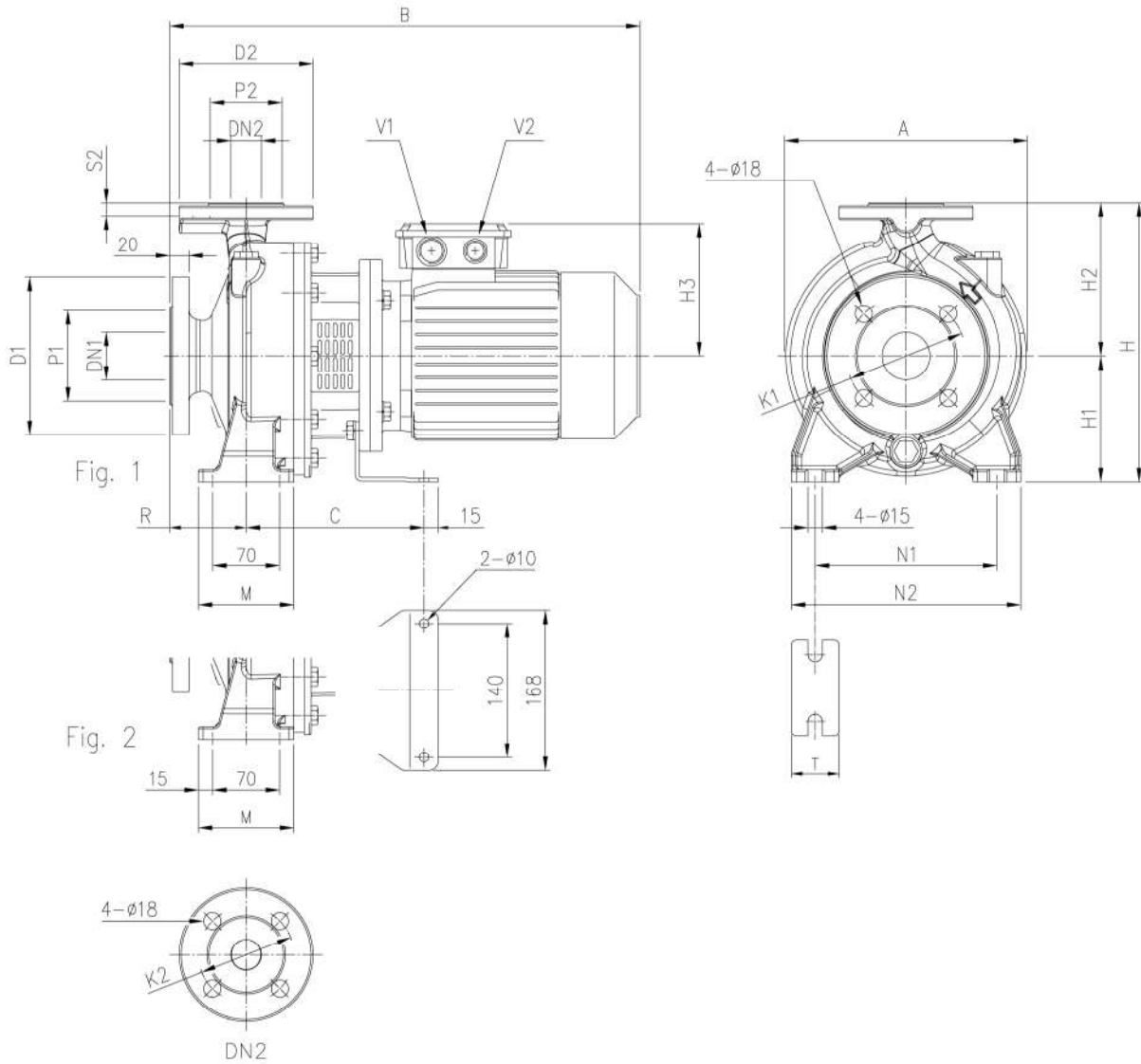
PUMP MODEL	DIMENSION (mm)																								WEIGHT						
	DN1	P1	K1	D1	S1	DN2	P2	K2	D2	S2	H	H1	H2	H3	R	W	M	N1	N2	T	E	A	A1	A2	B	C	V1	V2	(kg)		
	$\phi$	$\phi$	$\phi$	$\phi$		$\phi$	$\phi$	$\phi$	$\phi$																	[IE3]			[IE3]		
AMBF 232-125/1.50	50	102	125	165	20	32	78	100	140	18	252	112	140	124	80	70	100	140	190	50	10	213	107	107	407	-	219-230	-	PG13.5	29.5	-
AMBF 232-160/2.00	50	102	125	165	20	32	78	100	140	18	292	132	160	124	80	70	100	190	240	50	10	254	127	127	407	-	219-230	-	PG13.5	33.5	-
AMBF 232-160/3.00	50	102	125	165	20	32	78	100	140	18	292	132	160	124	80	70	100	190	240	50	10	254	127	127	432	-	244-255	-	PG13.5	36.0	-
AMBF 232-200/4.00	50	102	125	165	20	32	78	100	140	18	340	160	180	124	80	70	100	190	240	50	10	296	148	148	471	-	244-255	-	PG13.5	47.5	-
AMBF 232-200/5.50	50	102	125	165	20	32	78	100	140	18	340	160	180	141	80	70	100	190	240	50	10	296	148	148	494	-	253	-	PG16	50.0	-
AMBF 232-200/10.00	50	102	125	165	20	32	78	100	140	18	340	160	180	150	80	70	100	190	240	50	10	296	148	148	519	539	275	PG13.5	PG16	62.0	65.1
AMBF 240-125/2.00	65	122	145	185	20	40	88	110	150	18	252	112	140	124	80	70	100	160	210	50	10	220	108	112	407	-	219-230	-	PG13.5	30.0	-
AMBF 240-125/3.00	65	122	145	185	20	40	88	110	150	18	252	112	140	124	80	70	100	160	210	50	10	220	108	112	432	-	244-255	-	PG13.5	32.0	-
AMBF 240-160/4.00	65	122	145	185	20	40	88	110	150	18	292	132	160	124	80	70	100	190	240	50	12	254	127	127	471	-	244-255	-	PG13.5	39.0	-
AMBF 240-160/5.50	65	122	145	185	20	40	88	110	150	18	292	132	160	141	80	70	100	190	240	50	12	254	127	127	494	-	253	-	PG16	48.0	-
AMBF 240-200/7.50	65	122	145	185	20	40	88	110	150	18	340	160	180	150	100	70	100	212	265	50	12	296	148	148	539	-	275	PG13.5	PG16	60.0	-
AMBF 240-200/10.00	65	122	145	185	20	40	88	110	150	18	340	160	180	150	100	70	100	212	265	50	12	296	148	148	539	539	275	PG13.5	PG16	63.0	66.1
AMBF 240-200/15.00	65	122	145	185	20	40	88	110	150	18	340	160	180	178	100	70	100	212	265	50	12	296	148	148	595	-	359	PG13.5	PG21	80.0	82.4
AMBF 250-125/3.00	65	122	145	185	20	50	102	125	165	20	292	132	160	124	100	70	100	190	240	50	10	254	127	127	452	-	244-255	-	PG13.5	37.0	-
AMBF 250-125/4.00	65	122	145	185	20	50	102	125	165	20	292	132	160	124	100	70	100	190	240	50	10	254	127	127	491	-	244-255	-	PG13.5	39.5	-
AMBF 250-125/5.50	65	122	145	185	20	50	102	125	165	20	292	132	160	141	100	70	100	190	240	50	10	254	127	127	514	-	253	-	PG16	48.0	-
AMBF 250-160/7.50	65	122	145	185	20	50	102	125	165	20	340	160	180	150	100	70	100	212	165	50	10	296	148	148	539	-	275	PG13.5	PG16	60.0	-
AMBF 250-160/10.00	65	122	145	185	20	50	102	125	165	20	340	160	180	150	100	70	100	212	165	50	10	296	148	148	539	559	275	PG13.5	PG16	64.0	67.1
AMBF 250-200/12.50	65	122	145	185	20	50	102	125	165	20	360	160	200	178	100	70	100	212	165	50	10	296	148	148	595	-	359	PG13.5	PG21	77.0	77.0
AMBF 250-200/15.00	65	122	145	185	20	50	102	125	165	20	360	160	200	178	100	70	100	212	165	50	10	296	148	148	595	-	359	PG13.5	PG21	80.0	82.4
AMBF 265-125/5.50	80	138	160	200	22	65	122	145	185	20	340	160	180	141	100	95	125	212	280	65	12	263	127	136	514	-	253	-	PG16	53	-
AMBF 265-125/7.50	80	138	160	200	22	65	122	145	185	20	340	160	180	150	100	95	125	212	280	65	12	263	127	136	539	-	275	PG13.5	PG16	65.0	-
AMBF 265-125/10.00	80	138	160	200	22	65	122	145	185	20	340	160	180	150	100	95	125	212	280	65	12	263	127	136	539	559	275	PG13.5	PG16	69.5	72.6
AMBF 265-160/10.00	80	138	160	200	22	65	122	145	185	20	360	160	200	150	100	95	125	212	280	65	12	196	148	148	539	559	275	PG13.5	PG16	70.0	73.1
AMBF 265-160/12.50	80	138	160	200	22	65	122	145	185	20	360	160	200	178	100	95	125	212	280	65	12	196	148	148	595	-	359	PG13.5	PG21	85.0	85.0
AMBF 265-160/15.00	80	138	160	200	22	65	122	145	185	20	360	160	200	178	100	95	125	212	280	65	12	196	148	148	595	-	359	PG13.5	PG21	85.0	87.4

### DIMENSION (2 POLES):



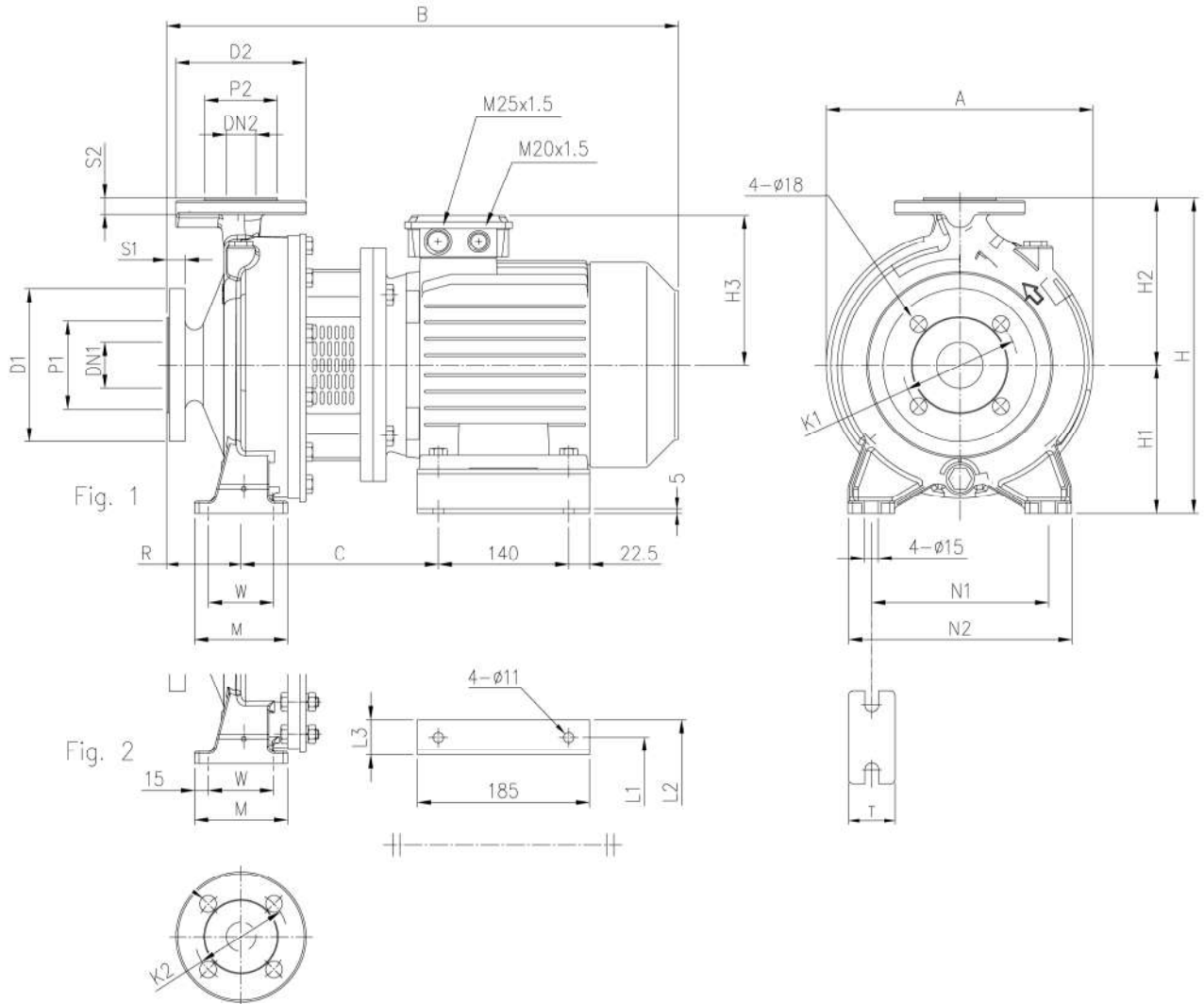
PUMP MODEL	DIMENSION (mm)																												WEIGHT											
	DN1	P1	K1	D1	S1	DN2	P2	K2	D2	S2	H	H1	H2	H3	Fig.	R	W	M	N1	N2	T	E	A	A1	A2	B	C	L	L1	L2	L3	L4	D	F	S	V1	V2	(kg)		
	ø	ø	ø	ø	ø	ø	ø	ø	ø	ø																														[IE3]
AMBF 250-200/20.00	65	122	145	185	20	50	102	125	165	20	360	160	200	223	2	100	70	100	212	265	50	10	296	155	142	723	191	254	254	318	64	304	-	-	-	PG21	PG21	121.0	124.1	
AMBF 265-160/20.00	80	138	160	200	22	65	122	145	185	20	360	160	200	223	2	100	95	125	212	280	65	12	296	154.5	141.5	732	199.5	254	254	318	64	304	-	-	-	PG21	PG21	126.0	129.1	
AMBF 265-125/10.00	80	138	160	200	22	65	122	145	185	20	405	180	225	223	1	100	95	125	250	320	65	12	312	154.5	158	732	-	-	254	314	60	345	500	20	20	PG21	PG21	126.0	129.1	
AMBF 265-160/10.00	80	138	160	200	22	65	122	145	185	20	405	180	225	223	1	100	95	125	250	320	65	12	312	154.5	158	732	-	-	254	314	60	345	500	20	20	PG21	PG21	140.0	146.3	
AMBF 265-160/12.50	80	138	160	200	22	65	122	145	185	20	405	180	225	223	1	100	95	125	250	320	65	12	312	154.5	158	732	-	-	254	314	60	345	500	20	20	PG21	PG21	152.0	158.1	

**DIMENSION (2 POLES):**



PUMP MODEL	DIMENSION (mm)																							WEIGHT (kg)	
	DN1	P1	K1	D1	DN2	P2	K2	D2	S2	Fig.	H	H1	H2	H3	R	M	N1	N2	T	A	B	C	V1		V2
	$\phi$	$\phi$	$\phi$	$\phi$	$\phi$	$\phi$	$\phi$	$\phi$	$\phi$																
AMBFL 232-125/1.50	50	102	125	165	32	78	100	140	18	1	252	112	140	139	80	100	140	190	50	213	430	174	M25x1.5	M20x1.5	30.5
AMBFL 232-160/2.00	50	102	125	165	32	75	100	140	18	1	292	132	160	148	80	100	190	240	50	254	477	186	M25x1.5	M20x1.5	36.3
AMBFL 232-160/3.00	50	102	125	165	32	75	100	140	18	1	292	132	160	148	80	100	190	240	50	254	477	186	M25x1.5	M20x1.5	40.4
AMBFL 240-125/2.00	65	115	145	185	40	80	110	150	14	1	252	112	140	148	80	114	160	210	50	213	477	186	M25x1.5	M20x1.5	31.9
AMBFL 240-125/3.00	65	115	145	185	40	80	110	150	14	1	252	112	140	148	80	114	160	210	50	213	477	186	M25x1.5	M20x1.5	35.5
AMBFL 250-125/3.00	65	115	145	185	50	95	125	165	16	2	292	132	160	148	100	114	190	240	50	254	497	186	M25x1.5	M20x1.5	37.9

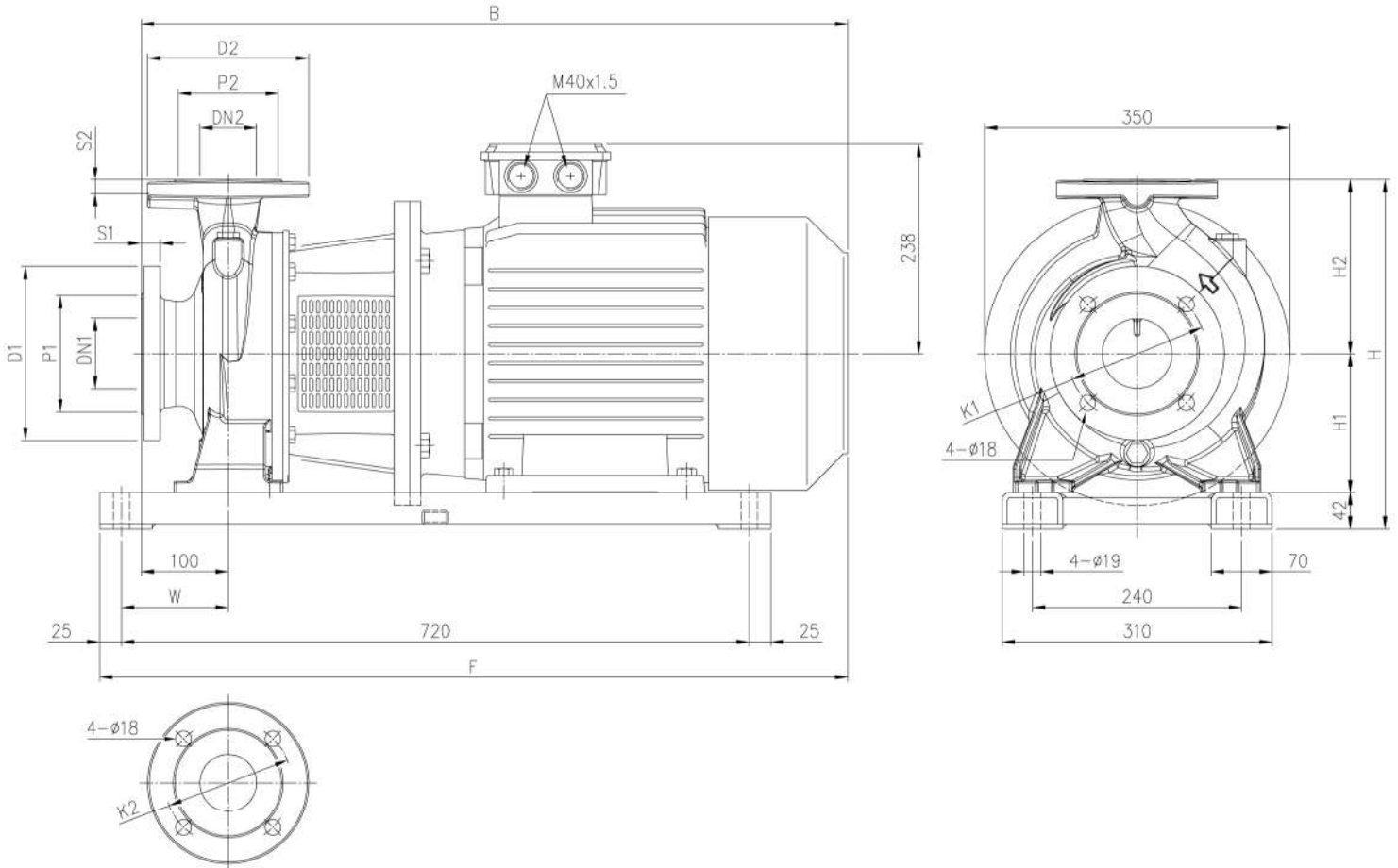
**DIMENSION (2 POLES):**



PUMP MODEL	DIMENSION (mm)																							WEIGHT (kg)				
	DN1	P1	K1	D1	S1	DN2	P2	K2	D2	S2	Fig.	H	H1	H2	H3	R	W	M	N1	N2	T	A	B		C	L1	L2	L3
	ø	ø	ø	ø		ø	ø	ø	ø																			
AMBFL 232-200/4.00	50	102	125	165	20	32	78	100	140	18	1	340	160	180	155	80	70	100	190	240	50	296	528	205	160	202	42	59.3
AMBFL 232-200/5.50	50	102	125	165	20	32	78	100	140	18	1	340	160	180	171	80	70	100	190	240	50	296	550	212	190	228	38	60.8
AMBFL 265-125/5.50	80	138	160	200	22	65	122	145	185	20	2	340	160	180	171	100	95	125	212	280	65	180	570	212	190	228	38	65.4

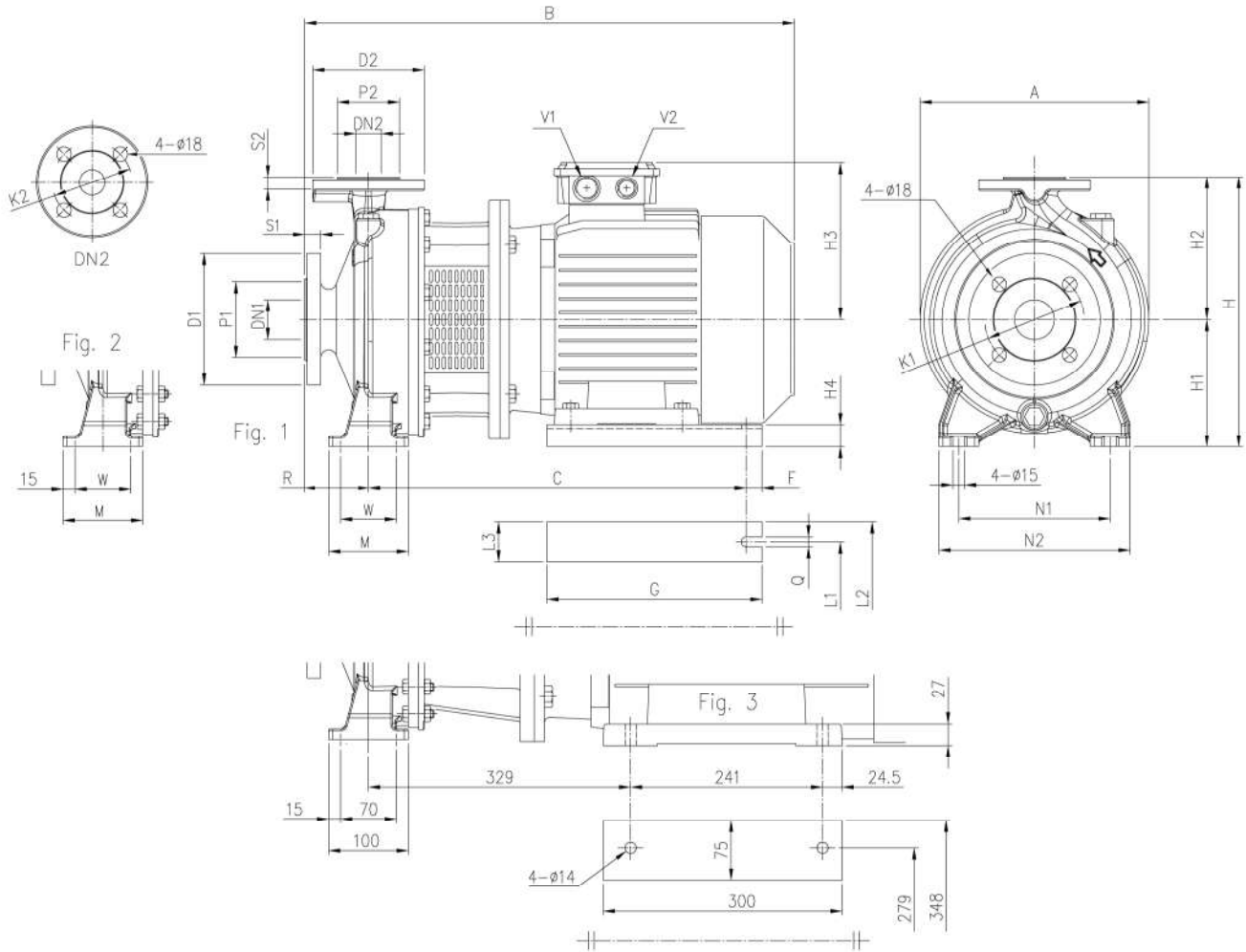


**DIMENSION (2 POLES):**



PUMP MODEL	DIMENSION (mm)																	WEIGHT	
	DN1	P1	K1	D1	S1	DN2	P2	K2	D2	S2	H	H1	H2	W	B	F	(kg)	[IE3]	
	Ø	Ø	Ø	Ø		Ø	Ø	Ø	Ø										
AMBFL 240-200/15.00	65	122	145	185	20	40	88	110	150	18	382	160	80	110	796	833	120.0	130.8	
AMBFL 250-200/15.00	65	122	145	185	20	50	102	125	165	20	402	160	200	110	796	833	120.0	130.8	
AMBFL 250-200/20.00	65	122	145	185	20	50	102	125	165	20	402	160	200	110	796	833	150.0	166.9	
AMBFL 265-160/15.00	80	138	160	200	22	65	115	145	185	20	402	160	200	123	806	846	96.0	106.8	
AMBFL 265-160/20.00	80	138	160	200	22	65	115	145	185	20	402	160	200	123	806	846	126.0	142.9	

### DIMENSION (2 POLES):



PUMP MODEL	DIMENSION (mm)																											WEIGHT								
	DN1	P1	K1	D1	S1	DN2	P2	K2	D2	S2	Fig.	H	H1	H2	H3	H4	R	W	M	N1	N2	T	A	B	C	F	G	Q	L1	L2	L3	V1	V2	(kg)	[IE3]	
	ø	ø	ø	ø	ø	ø	ø	ø	ø																											
AMBFL 232-200/10.00	50	102	125	165	20	32	78	100	140	18	1	340	160	180	198	28	80	70	100	190	240	50	296	607	479	15	270	12	216	266	50	M32x1.5	M32x1.5	90.0	92.0	
AMBFL 240-160/4.00	65	122	145	185	20	40	88	110	150	18	1	292	132	160	155	32	80	70	100	190	240	50	254	528	388	15	220	12	160	200	40	M25x1.5	M20x1.5	65.6	-	
AMBFL 240-160/5.50	65	122	145	185	20	40	88	110	150	18	1	292	132	160	171	20	80	70	100	190	240	50	254	550	395	15	220	12	190	240	50	M25x1.5	M20x1.5	51.8	-	
AMBFL 240-200/7.50	65	122	145	185	20	40	88	110	150	18	2	340	160	180	198	28	100	70	100	212	265	50	296	627	479	15	270	12	216	266	50	M32x1.5	M32x1.5	79.7	-	
AMBFL 240-200/10.00	65	122	145	185	20	40	88	110	150	18	2	340	160	180	198	28	100	70	100	212	265	50	296	627	479	15	270	12	216	266	50	M32x1.5	M32x1.5	86.8	88.8	
AMBFL 250-125/4.00	65	122	145	185	20	50	102	125	165	20	2	292	132	160	155	32	100	70	100	190	240	50	254	548	388	15	220	12	160	200	40	M25x1.5	M20x1.5	44.1	-	
AMBFL 250-125/5.50	65	122	145	185	20	50	102	125	165	20	2	292	132	160	171	20	100	70	100	190	240	50	254	570	395	15	220	12	190	240	50	M25x1.5	M20x1.5	52.7	-	
AMBFL 250-160/7.50	65	122	145	185	20	50	102	125	165	20	2	340	160	180	198	28	100	40	100	212	265	50	296	627	479	15	270	12	216	266	50	M32x1.5	M32x1.5	77.3	-	
AMBFL 250-160/10.00	65	122	145	185	20	50	102	125	165	20	2	340	160	180	198	28	100	70	100	212	265	50	296	627	479	15	270	12	216	266	50	M32x1.5	M32x1.5	97.5	99.5	
AMBFL 250-200/12.50	65	122	145	185	20	50	102	125	165	20	2	360	160	200	198	28	100	70	100	212	265	50	296	667	479	15	270	12	216	266	50	M32x1.5	M32x1.5	102.8	104.0	
AMBFL 265-125/7.50	80	138	160	200	22	65	122	145	185	20	2	340	160	180	198	28	100	95	125	212	280	65	263	627	479	15	270	12	216	266	50	M32x1.5	M32x1.5	76.3	-	
AMBFL 265-125/10.00	80	138	160	200	22	65	122	145	185	20	2	340	160	180	198	28	100	95	125	212	280	65	263	627	479	15	270	12	216	266	50	M32x1.5	M32x1.5	97.9	99.9	
AMBFL 265-160/10.00	80	138	160	200	22	65	122	145	185	20	2	360	160	200	198	28	100	95	125	212	280	65	296	627	479	15	270	12	216	266	50	M32x1.5	M32x1.5	98.2	99.2	
AMBFL 265-160/12.50	80	138	160	200	22	65	122	145	185	20	2	360	160	200	198	28	100	95	125	212	280	65	296	667	479	15	270	12	216	266	50	M32x1.5	M32x1.5	107.0	108.0	
AMBFL 265-200/20.00	80	138	160	200	22	65	122	145	185	20	2	405	180	225	238	20	100	95	125	250	320	65	312	806	621	20	350	14	254	314	60	M40x1.5	M40x1.5	140.1	156.9	
AMBFL 265-200/25.00	80	138	160	200	22	65	122	145	185	20	2	405	180	225	138	20	100	95	125	250	320	65	312	850	621	20	350	14	254	314	60	M40x1.5	M40x1.5	151.7	158.5	
AMBFL 265-200/30.00	80	138	160	200	22	65	122	145	195	20	3	405	180	225	138	-	100	-	-	250	320	65	312	885	-	-	-	-	-	-	-	-	M40x1.5	M40x1.5	190.0	197.0

## PERFORMANCE PARAMETER (4 POLES):

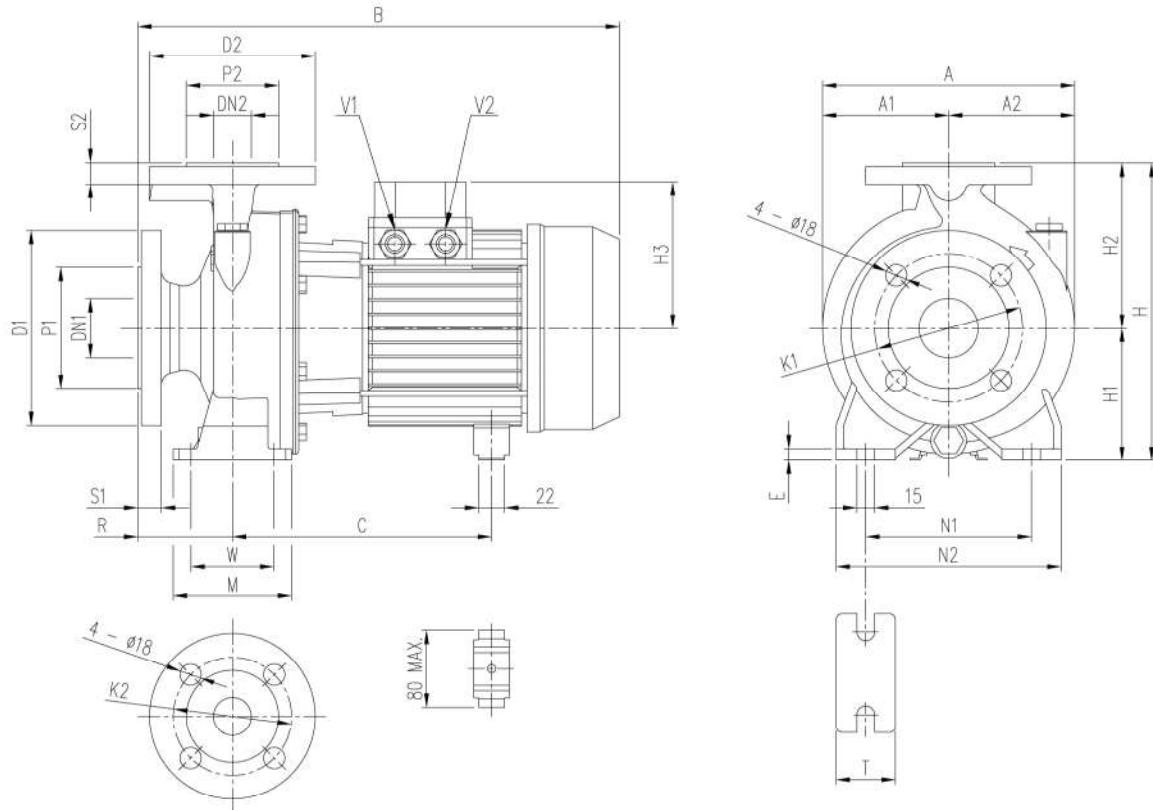
PUMP MODEL	POWER		CAPACITY (l/min)			
			50	100	150	175
	KW	HP	HEAD (m)			
AMBF 432-125/0.33	0.25	0.33	5.5	4.7	3.5	2.8
AMBF 432-125/0.50	0.37	0.50	8.7	8.1	7.0	6.3
AMBF 432-125/0.75	0.55	0.75	12.0	11.0	9.2	8.0
AMBF 432-125/1.00	0.75	1.00	17.1	16.1	14.3	13.2

PUMP MODEL	POWER		CAPACITY (l/min)						
			100	150	175	200	250	300	350
	KW	HP	HEAD (m)						
AMBF 440-125/0.50	0.37	0.50	6.3	6.0	5.8	5.5	4.9	4.2	3.4
AMBF 440-125/0.75	0.55	0.75	8.6	8.1	7.8	7.5	6.9	6.2	5.4
AMBF 440-125/1.50	1.10	1.50	13.2	12.7	12.4	12.1	11.4	10.6	9.6
AMBF 440-125/2.00	2.20	2.00	17.7	17.3	17.1	16.8	16.1	15.2	14.2

PUMP MODEL	POWER		CAPACITY (l/min)							
			200	250	300	350	400	500	600	650
	KW	HP	HEAD (m)							
AMBF 450-125/0.75	0.55	0.75	6.2	6.0	5.7	5.4	5.0	4.2	3.3	-
AMBF 450-160/1.50	1.10	1.50	9.1	8.9	8.6	8.3	7.9	7.0	6.0	5.5
AMBF 450-200/2.00	1.50	2.00	13.3	13.0	12.7	12.2	11.8	10.6	9.2	8.4
AMBF 450-200/3.00	2.20	3.00	17.5	17.3	17.0	16.6	16.2	15.1	13.8	13.1

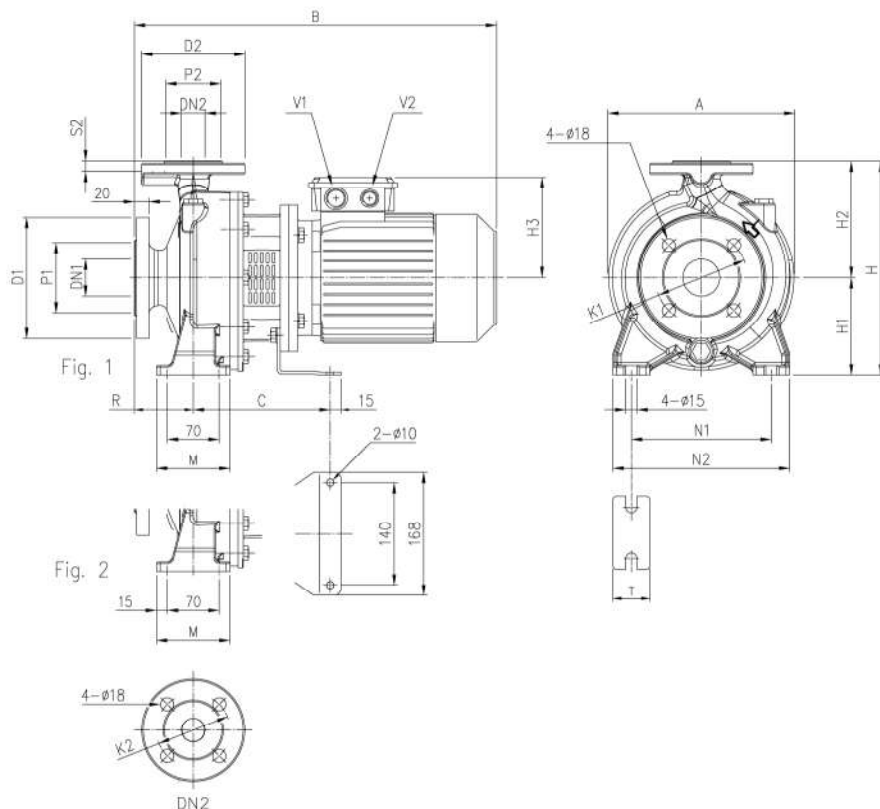
PUMP MODEL	POWER		CAPACITY (l/min)									
			300	350	500	600	800	950	1000	1050	1100	1200
	KW	HP	HEAD (m)									
AMBF 465-125/0.75	0.55	0.75	4.8	4.6	4.0	3.5	2.3	1.4	-	-	-	-
AMBF 465-125/1.00	0.75	1.00	6.0	5.8	5.2	4.6	3.5	2.5	2.2	-	-	-
AMBF 465-125/1.50	1.10	1.50	7.2	7.0	6.3	5.7	4.5	3.5	3.2	2.8	-	-
AMBF 465-160/1.50	1.10	1.50	-	8.1	7.4	6.9	5.7	4.6	4.2	3.8	-	-
AMBF 465-160/2.00	1.50	2.00	-	9.2	8.5	8.0	6.7	5.7	5.3	4.9	4.5	-
AMBF 465-160/3.00	2.20	3.00	-	11.3	10.6	10.1	8.8	7.6	7.2	6.8	6.4	5.5
AMBF 465-200/3.00	2.20	3.00	-	13.9	13.0	12.4	10.8	9.3	8.8	8.3	7.8	-
AMBF 465-200/4.00	3.00	4.00	-	15.8	15.1	14.4	12.9	11.6	11.1	10.6	10.1	9.0

### DIMENSION (4 POLES):



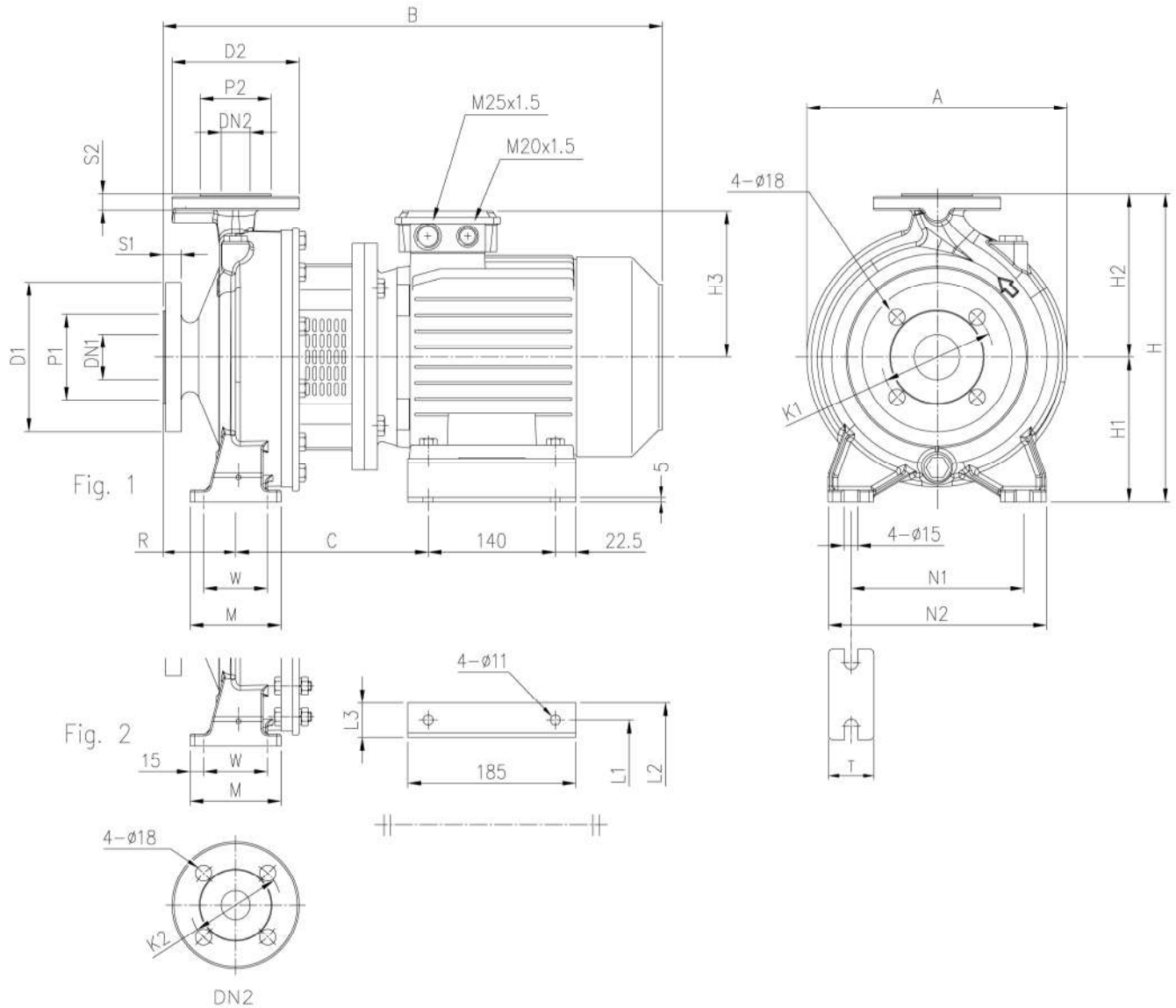
PUMP MODEL	DIMENSION (mm)																							WEIGHT (kg)					
	DN1	P1	K1	D1	S1	DN2	P2	K2	D2	S2	Fig.	H	H1	H2	H3	R	W	M	N1	N2	T	E	A		A1	A2	B	C	V2
AMBF 432-125/0.33	50	102	125	165	20	32	78	100	140	18	1	252	112	140	102	80	70	100	140	190	50	10	213	106.5	106.5	371	205	PG11	23.9
AMBF 432-125/0.50	50	102	125	165	20	32	78	100	140	18	1	292	132	160	119	80	70	100	190	240	50	10	254	127	127	393	219	PG11	31.3
AMBF 432-125/0.75	50	102	125	165	20	32	78	100	140	18	1	340	160	180	119	80	70	100	190	240	50	10	296	148	148	393	219	PG11	35.9
AMBF 432-125/1.00	50	102	125	165	20	32	78	100	140	18	1	340	160	180	124	80	70	100	190	240	50	10	296	148	148	432	244-255	PG13.5	39.5
AMBF 440-125/0.50	65	122	145	185	20	40	88	110	150	18	1	252	112	140	102	80	70	100	160	210	50	10	213	112	112	371	205	PG11	24.8
AMBF 440-125/0.75	65	122	145	185	20	40	88	110	150	18	1	292	132	160	119	80	70	100	190	240	50	12	254	127	127	393	219	PG11	32.7
AMBF 440-125/1.50	65	122	145	185	20	40	88	110	150	18	2	340	160	180	124	100	70	100	212	265	50	12	296	148	148	452	244-255	PG13.5	41.3
AMBF 440-125/2.00	65	122	145	185	20	40	88	110	150	18	2	340	160	180	124	100	70	100	212	265	50	12	296	148	148	491	244-255	PG13.5	43.0
AMBF 450-125/0.75	65	122	145	185	20	50	102	125	165	20	2	292	132	160	119	100	70	100	190	240	50	10	254	127	127	413	219	PG11	32.8
AMBF 450-160/1.50	65	122	145	185	20	50	102	125	165	20	2	340	160	180	124	100	70	100	212	265	50	10	296	148	148	452	244-255	PG13.5	42.3
AMBF 450-200/2.00	65	122	145	185	20	50	102	125	165	20	2	360	160	200	124	100	70	100	212	265	50	10	296	148	148	491	244-255	PG13.5	44.5
AMBF 450-200/3.00	65	122	145	185	20	50	102	125	165	20	2	360	160	200	141	100	70	100	212	265	50	10	296	148	148	474	253	PG16	42.9
AMBF 465-125/0.75	80	138	160	200	22	65	122	145	185	20	2	340	160	180	119	100	95	125	212	280	65	12	263	127	136	413	219	PG11	37.2
AMBF 465-125/1.00	80	138	160	200	22	65	122	145	185	20	2	340	160	180	124	100	95	125	212	280	65	12	263	127	136	452	244-255	PG13.5	35.3
AMBF 465-125/1.50	80	138	160	200	22	65	122	145	185	20	2	340	160	180	124	100	95	125	212	280	65	12	263	127	136	452	244-255	PG13.5	35.3
AMBF 465-160/1.50	80	138	160	200	22	65	122	145	185	20	2	360	160	200	124	100	95	125	212	280	65	12	296	148	148	452	244-255	PG13.5	44.6
AMBF 465-160/2.00	80	138	160	200	22	65	122	145	185	20	2	360	160	200	124	100	95	125	212	280	65	12	296	148	148	491	244-255	PG13.5	46.1
AMBF 465-160/3.00	80	138	160	200	22	65	122	145	185	20	2	360	160	200	141	100	95	125	212	280	65	12	296	1478	148	474	253	PG16	48.1
AMBF 465-200/3.00	80	138	160	200	22	65	122	145	185	20	2	405	180	225	141	100	95	125	250	320	65	12	312	154.5	157.5	474	253	PG16	46.5
AMBF 465-200/4.00	80	138	160	200	22	65	122	145	185	20	2	405	180	225	141	100	95	125	250	320	65	12	312	154.5	157.5	514	253	PG16	54.5

**DIMENSION (4 POLES):**



PUMP MODEL	DIMENSION (mm)																								WEIGHT (kg)					
	DN1	P1	K1	D1	S1	DN2	P2	K2	D2	S2	Fig.	H	H1	H2	H3	R	W	M	N1	N2	T	A	B	C		X	Y	K	V1	V2
	ø	ø	ø	ø		ø	ø	ø	ø																					
AMBFL 432-125/0.33	50	102	125	165	20	32	78	100	140	18	1	252	112	140	114	80	70	100	140	190	50	213	404	153	112	140	8	M20x1.5	M16x1.5	24.3
AMBFL 432-125/0.50	50	102	125	165	20	32	78	100	140	18	1	292	132	160	114	80	70	100	190	240	50	254	404	153	112	140	8	M20x1.5	M16x1.5	30.1
AMBFL 432-125/0.75	50	102	125	165	20	32	78	100	140	18	1	340	160	190	139	80	70	100	190	240	50	296	430	174	140	168	10	M25x1.5	M20x1.5	44.4
AMBFL 432-125/1.00	50	102	125	165	20	32	78	100	140	18	1	340	160	180	139	80	70	100	190	240	50	296	430	174	140	168	10	M25x1.5	M20x1.5	40.9
AMBFL 440-125/0.50	65	122	145	185	20	40	88	110	150	18	1	252	112	140	114	80	70	100	160	210	50	220	404	153	112	140	8	M20x1.5	M16x1.5	25.3
AMBFL 440-125/0.75	65	122	145	185	20	40	88	110	150	18	1	292	132	160	139	80	70	100	190	240	50	254	430	174	140	168	10	M25x1.5	M20x1.5	35.6
AMBFL 440-125/1.50	65	122	145	185	20	40	88	110	150	18	2	340	160	180	148	100	70	100	212	265	50	296	497	186	140	168	10	M25x1.5	M20x1.5	47.0
AMBFL 440-125/2.00	65	122	145	185	20	40	88	110	150	18	2	340	160	180	148	100	70	100	212	265	50	296	497	186	140	168	10	M25x1.5	M20x1.5	48.2
AMBFL 450-125/0.75	65	122	145	185	20	50	102	125	165	20	2	292	132	160	139	100	70	100	190	240	50	254	450	174	140	168	10	M25x1.5	M20x1.5	36.0
AMBFL 450-160/1.50	65	122	145	185	20	50	102	125	165	20	2	340	160	180	148	100	70	100	212	265	50	296	497	186	140	168	10	M25x1.5	M20x1.5	47.6
AMBFL 450-200/2.00	65	122	145	185	20	50	102	125	165	20	2	360	160	200	148	100	70	100	212	265	50	296	497	186	140	168	10	M25x1.5	M20x1.5	50.0
AMBFL 465-125/0.75	80	138	160	200	22	65	122	145	185	20	2	340	160	180	139	100	95	125	212	280	65	263	450	174	140	168	10	M25x1.5	M20x1.5	36.8
AMBFL 465-125/1.00	80	138	160	200	22	65	122	145	185	20	2	340	160	180	39	100	95	125	212	280	65	263	450	174	140	168	10	M25x1.5	M20x1.5	45.3
AMBFL 465-125/1.50	80	138	160	200	22	65	122	145	185	20	2	340	160	180	148	100	95	125	212	280	65	263	497	186	140	168	10	M25x1.5	M20x1.5	45.3
AMBFL 465-160/1.50	80	138	160	200	22	65	122	145	185	20	2	360	160	200	148	100	95	125	212	280	65	296	497	186	140	168	10	M25x1.5	M20x1.5	47.1
AMBFL 465-160/2.00	80	138	160	200	22	65	122	145	185	20	2	360	160	200	148	100	95	125	212	280	65	296	497	186	140	168	10	M25x1.5	M20x1.5	59.1

**DIMENSION (4 POLES):**



PUMP MODEL	DIMENSION (mm)																			WEIGHT (kg)
	DN1	P1	K1	D1	S1	DN2	P2	K2	D2	S2	H	H1	H2	W	M	A	N1	N2	T	
	ø	ø	ø	ø		ø	ø	ø	ø											
AMBFL 450-200/3.00	65	122	145	185	20	50	102	125	165	20	360	160	200	70	100	296	212	265	50	55.9
AMBFL 465-160/3.00	80	138	160	200	22	65	122	145	185	20	360	160	200	95	125	296	212	280	65	65.1
AMBFL 465-200/3.00	80	138	160	200	22	65	122	145	185	20	405	180	225	95	125	312	250	320	65	59.5
AMBFL 465-200/4.00	80	138	160	200	22	65	122	145	185	20	405	180	225	95	125	312	250	320	65	65.0