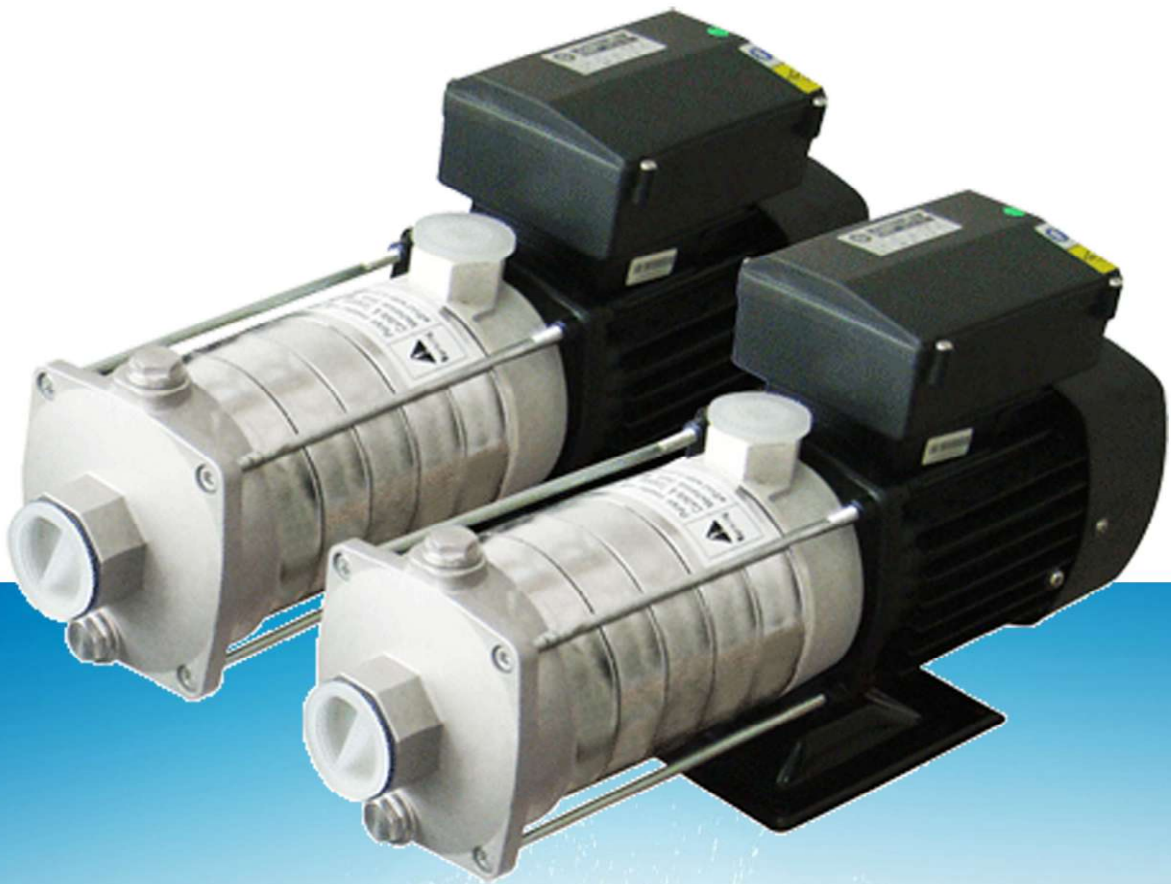




APEC-SUN

Horizontal Stainless Steel
Centrifugal Pump



Pump and motor are integrated in a compact and userfriendly design fitted to a base plate making the pumps suitable for installation in compact systems. ACI and ACN pumps have many incorporated advantages.

APPLICATIONS:

- Liquid transfer and circulation of liquids within light industry and farming.
- Pressure boosting in single-pump for house hold use.
- Package booster pumps system for small and medium building, Apartment, Hotel etc.
- Domestic water supply.
- Cooling systems.
- Air-conditioning systems.
- Water filtratin and R.O. system for water purification.
- **ACN** (AISI 316) version is suitable for food industry, electronic industry, brine water, sea water, and some chemical solution.

FEATURES:

MOTOR

- The pump is compact close couple with motro on the a steel base.
- The maximum flow rate is up to 31 m³/h.
- The maximum head is up to 60 meter.
- The maximum liquid temperature up to 110°C.
- All vital parts which contact with liquid are made of stainless steel AISI 304 (ACI) and AISI 316 (ACN).
- Mechanical seal is standardize with Carbon/Ceramic/Viton while the Tungstem/Carbon/Viton or SiC/SiC/iton are also available on request.

PUMP

- The motor is induction squirrel cage, TEFC motor.
- The winding is made from 100% copper enamel wire with high efficiency winding system.
- The insulation is class F insulatin iwth protection degree of IP55.
- The single pahse motor is made up to 3HP 220V 50Hz which provided with built-in overload.
- The three phase motor is made up to 4HP 3x220/380V 50Hz which overload is to be provided by the user.

CONSTRUCTION:

NAME	MATERIAL	
	ACI	CAN
Suction Chamber	AISI 304	AISI 316
Dischange Chamber	AISI 304	AISI 316
Chamber with Diffuser	AISI 304	AISI 316
Impeller	AISI 304	AISI 316
Pump Shaft	AISI 304	AISI 316
Mechanical Seal	Carbon / Ceramic / NBR*	
O-Ring	PTFE (Teflon)	

*Tungsten Carbide / Carbon / EPDM or SiC / SiC / Viton also available on request.

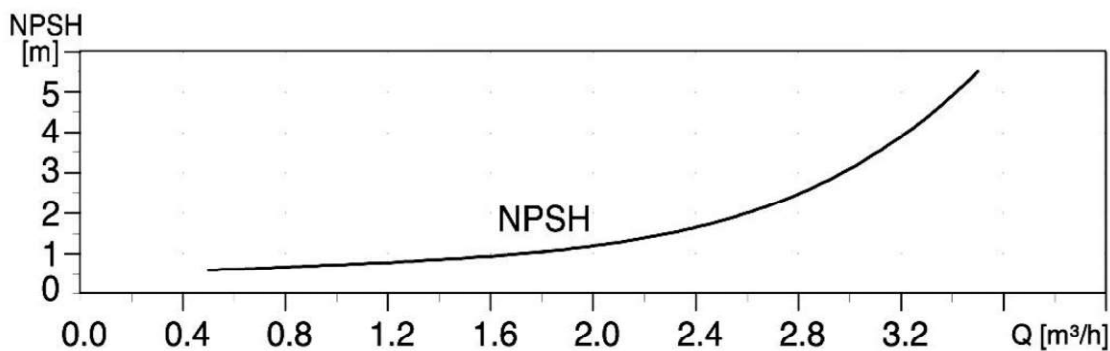
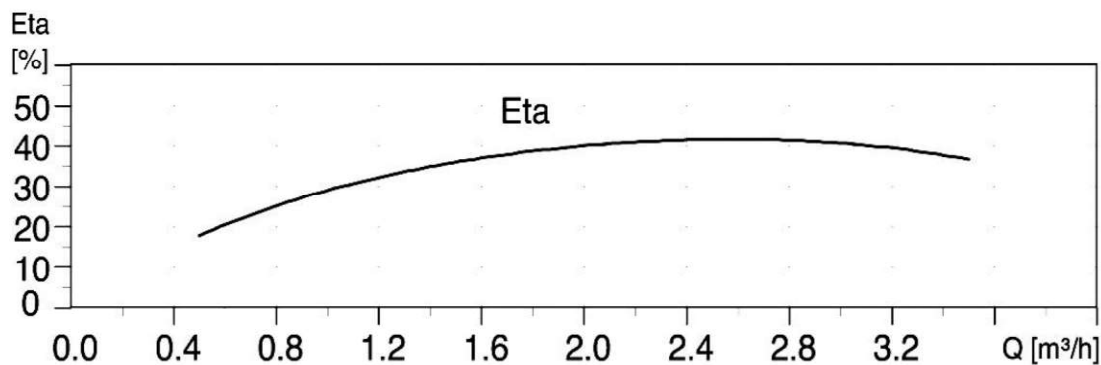
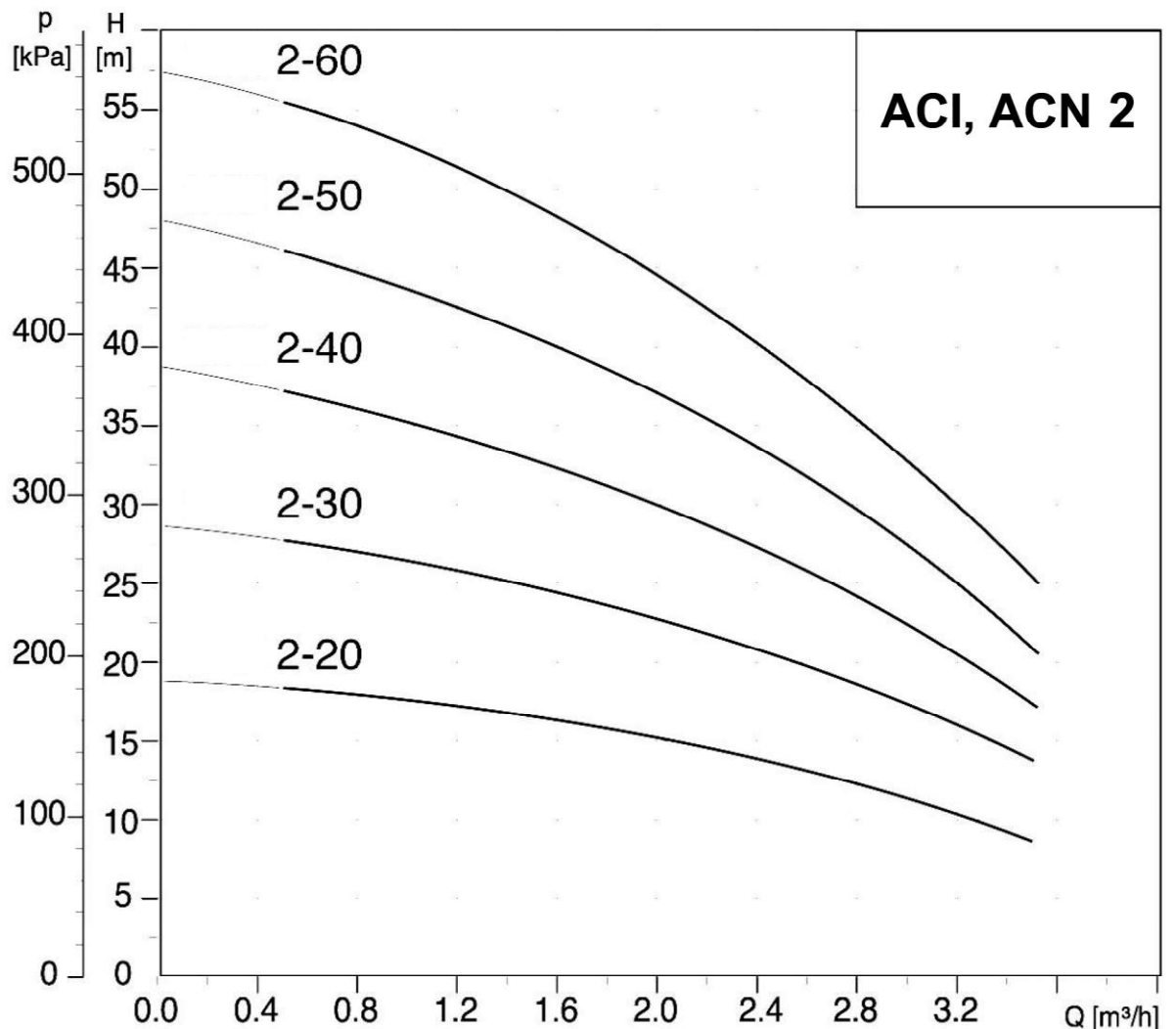
OPERATING CONDITIONS:

- Liquid temperature range: 0°C to 90°C..
- Maximum ambient temperature: 40°C.
- The maximum operating pressure depends on the temperature of the pumped liquid.
- Minimum inlet pressure: According to the NPSH curve plus a safety margin of 0.5 m.
- Maximum inlet pressure: Limited by the maximum operating pressure.

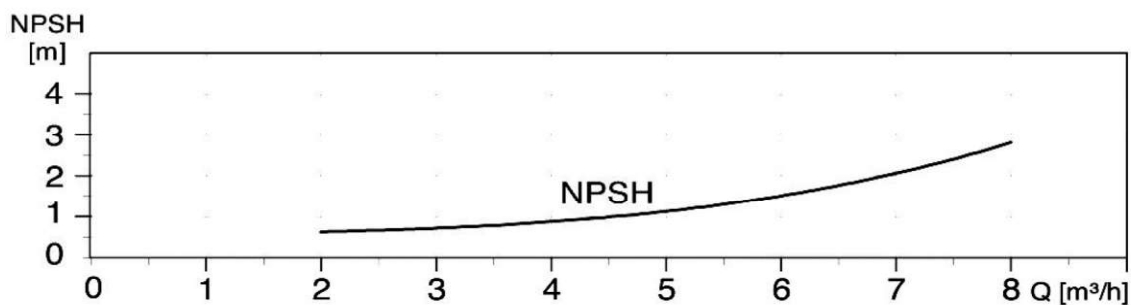
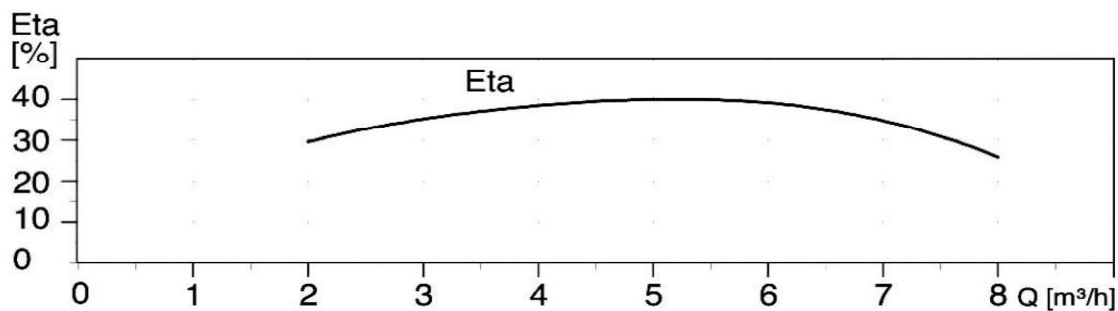
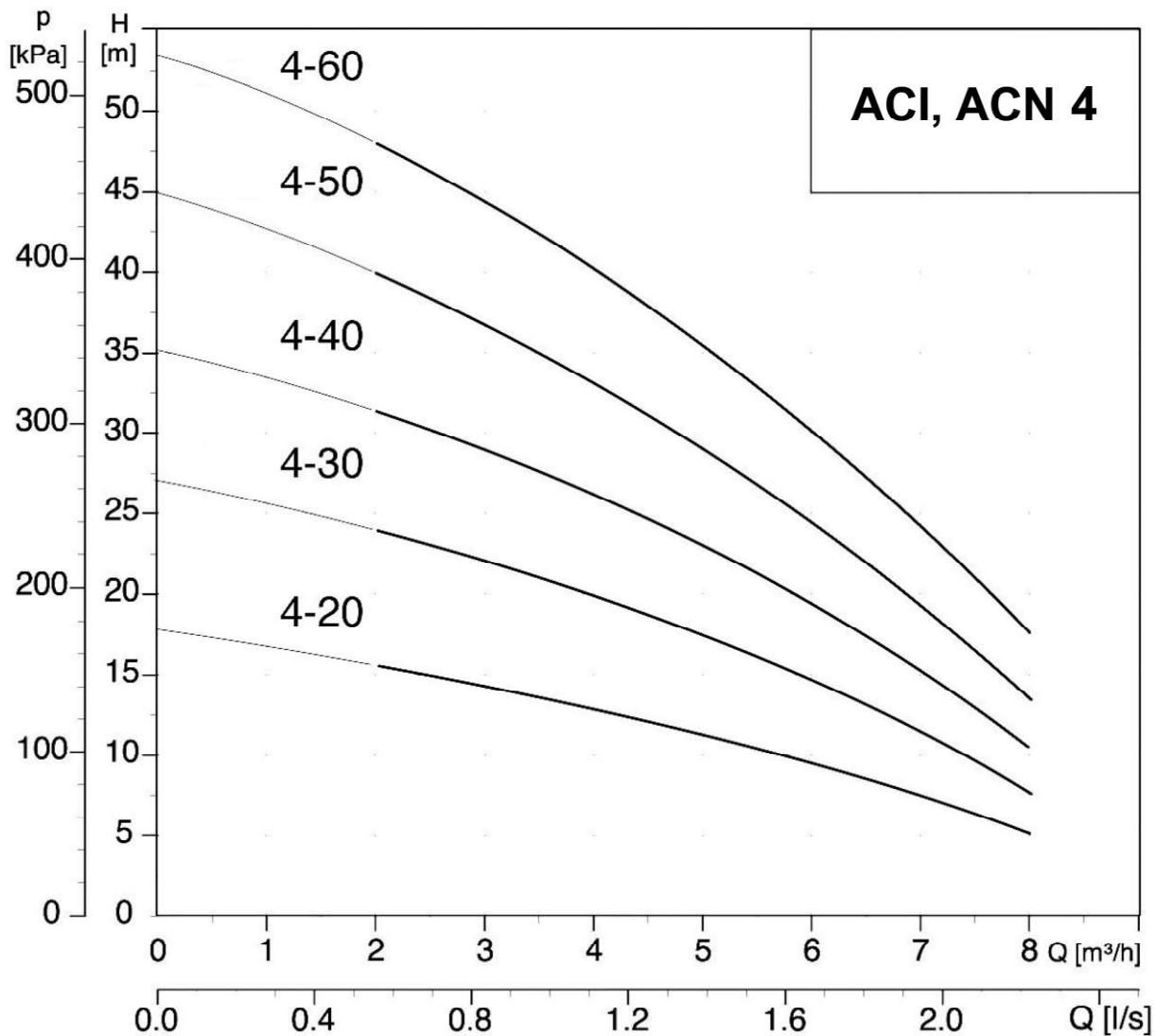
PERFORMANCE PARAMETER:

PUMP MODEL	POWER		HEAD (m)																							
			0.5	1.0	1.5	2.0	2.5	3.0	3.5	4.0	5.0	6.0	7.0	8.0	10.0	12.0	14.0	16.0	18.0	20.0	22.0	24.0	26.0	28.0	30.0	
	KW	HP	CAPACITY (m ³ /h)																							
2-20 (T)	0.37	0.50	18.5	17.5	16.5	15.0	13.0	11.0																		
2-30 (T)	0.55	0.75	27.5	26.5	25.0	22.5	20.0	17.0																		
2-40 (T)	0.55	0.75	36.5	35.0	32.5	30.0	26.0	22.5																		
2-50 (T)	0.55	0.75	46.0	44.0	40.5	37.0	33.5	27.5																		
2-60 (T)	0.75	1.00	55.0	52.5	48.5	45.0	39.5	32.5																		
4-20 (T)	0.55	0.75		16.5	16.0	15.5	15.0	14.5	14.0	12.5	11.0	9.5	7.5	5.0												
4-30 (T)	0.75	1.00		25.5	25.0	24.0	23.0	22.0	20.5	20.0	17.5	15.0	11.5	7.5												
4-40 (T)	0.75	1.00		33.5	32.5	31.0	30.0	29.0	27.5	26.0	23.0	19.5	15.0	10.0												
4-50 (T)	1.00	1.30		42.5	41.0	40.0	38.0	36.5	35.0	33.0	29.0	24.5	19.0	14.0												
4-60 (T)	1.10	1.50		51.0	50.0	47.5	46.0	44.5	42.5	40.0	35.0	30.0	24.5	17.5												
8-20 (T)	0.55	0.75				19.5	19.0	18.0	17.8	17.5	17.0	16.0	15.0	13.0	10.0											
8-30 (T)	0.75	1.00				29.0	28.5	28.0	27.8	27.5	26.0	25.0	23.0	20.5	15.0											
8-40 (T)	1.10	1.50				37.0	36.0	35.5	35.0	34.5	32.8	31.0	28.5	26.0	19.0											
8-50 (T)	1.50	2.00				47.0	46.0	45.0	44.5	43.0	41.0	38.0	35.0	32.0	23.5											
8-60 (T)	1.80	2.50				55.0	54.0	53.0	52.0	50.0	48.0	45.0	42.0	37.0	27.0											
8-70 (T)	2.20	3.00				62.0	60.0	59.0	57.5	56.0	54.0	50.0	46.0	42.0	31.0											
8-80 (T)	2.20	3.00				69.5	68.0	67.0	65.0	64.0	60.0	57.0	52.5	47.5	35.0											
12-20 (T)	1.00	1.30							22.0	21.5	21.0	20.0	19.5	19.0	18.0	17.0	15.0	12.0								
12-30 (T)	1.20	1.80							29.5	29.0	28.5	28.0	27.5	27.0	26.0	24.0	21.0	17.0								
12-40 (T)	1.85	2.50							39.0	38.5	38.0	37.5	36.5	35.5	35.0	32.0	27.5	23.0								
12-50 (T)	2.20	3.00							49.0	48.5	48.0	47.5	45.5	45.0	43.5	39.8	35.0	29.8								
12-60 (T)	3.00	4.00							59.0	58.5	58.0	57.5	56.0	55.0	53.0	48.0	43.0	36.0								
16-10 (T)	1.00	1.30											12.5	12.0	11.5	11.0	10.5	10.0	9.0	8.0	7.0	6.0	5.0			
16-20 (T)	1.50	2.00											25.0	24.8	23.5	22.5	22.0	20.0	18.5	17.5	15.0	14.0	12.0			
16-30 (T)	2.20	3.00											38.5	38.0	36.5	35.0	33.5	32.0	30.0	28.0	25.5	23.0	20.0			
16-40 (T)	3.00	4.00											51.0	50.0	48.0	47.0	45.0	43.0	41.0	38.5	36.0	33.0	30.0			
20-10 (T)	1.00	1.30													14.0	13.5	13.0	12.5	12.0	11.5	11.0	10.0	8.5	7.5	6.5	
20-20 (T)	1.85	2.50													25.0	24.5	24.0	23.5	22.5	21.0	20.0	18.0	17.0	15.0	12.5	
20-30 (T)	3.00	4.00													39.0	38.0	37.0	36.0	34.0	32.5	30.0	27.5	25.0	22.0	17.0	

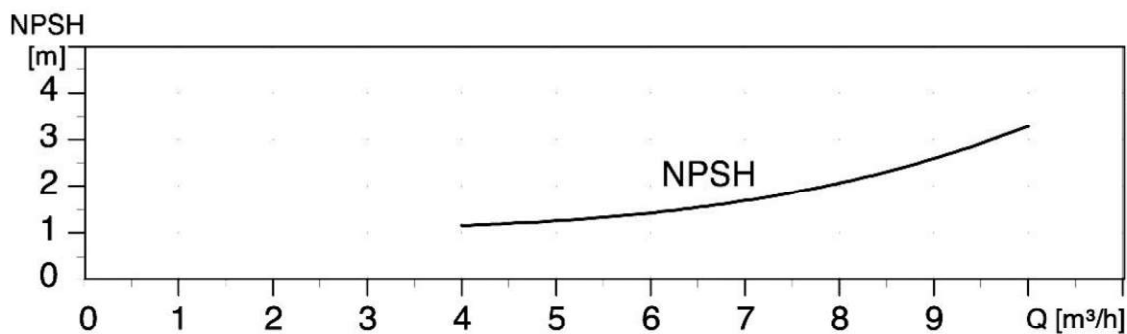
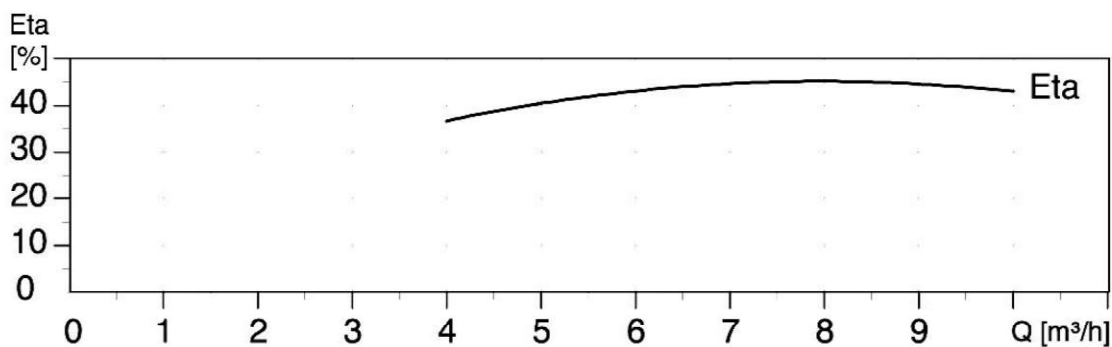
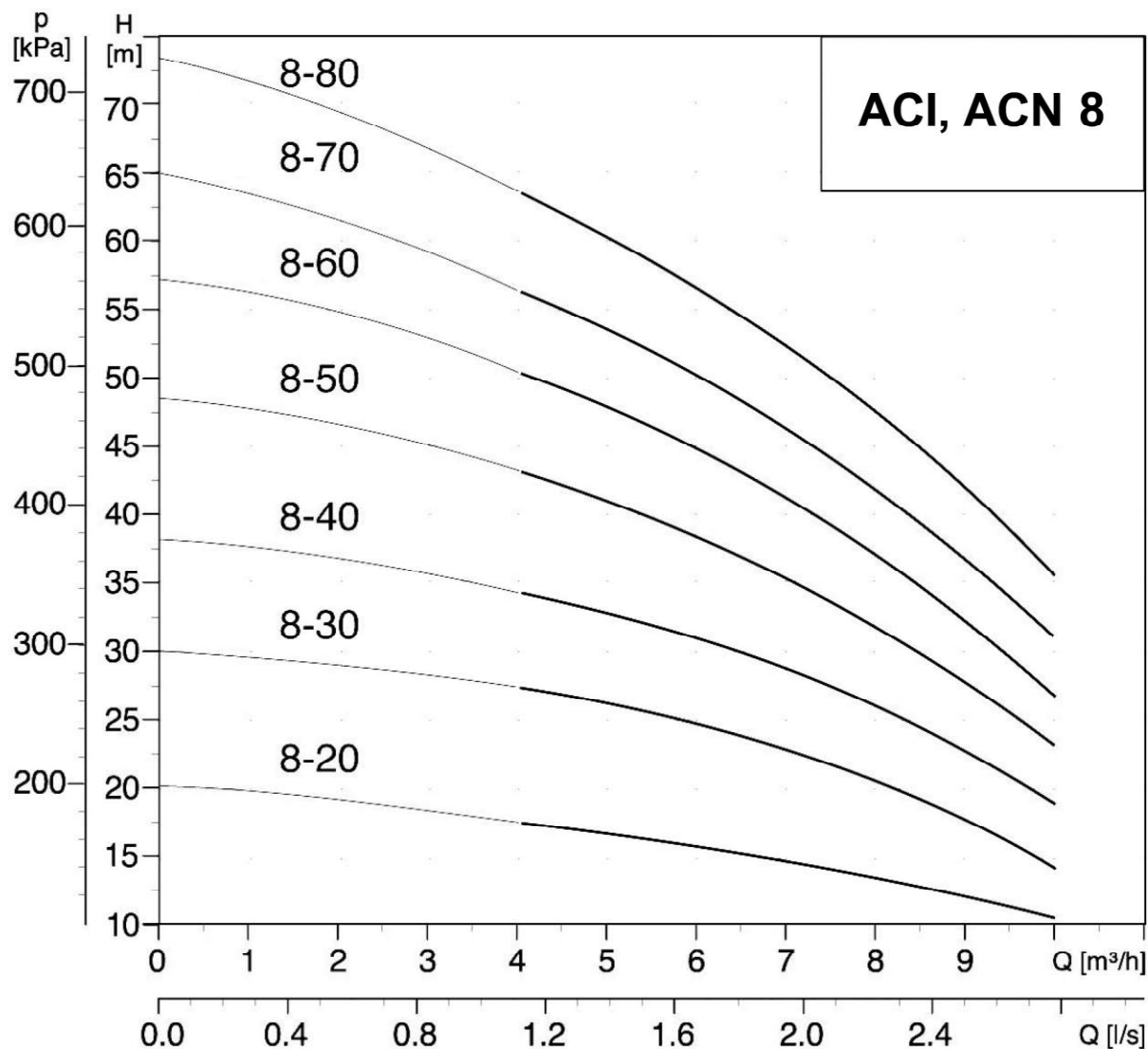
PERFORMANCE CURVES:



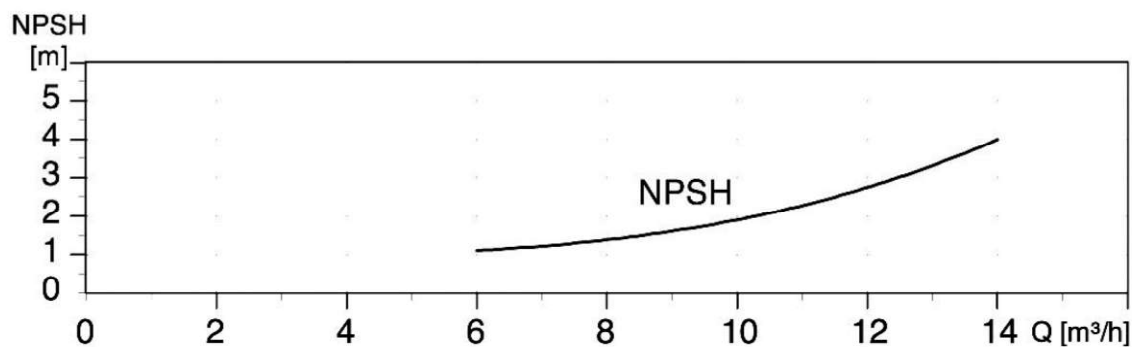
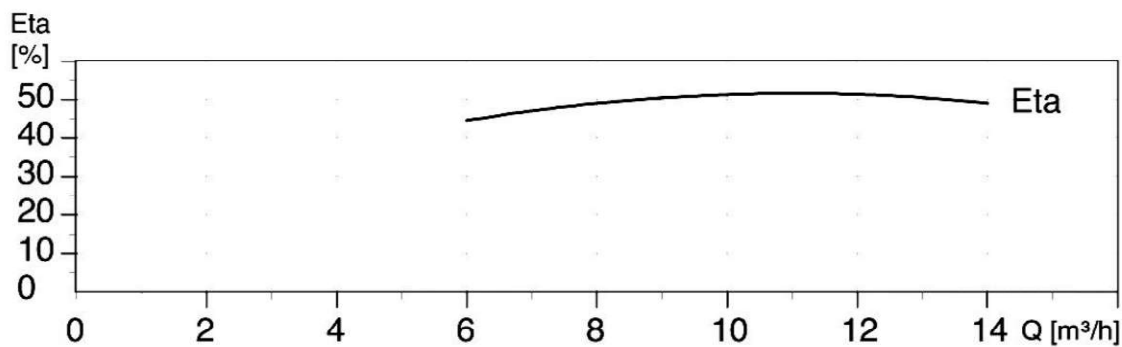
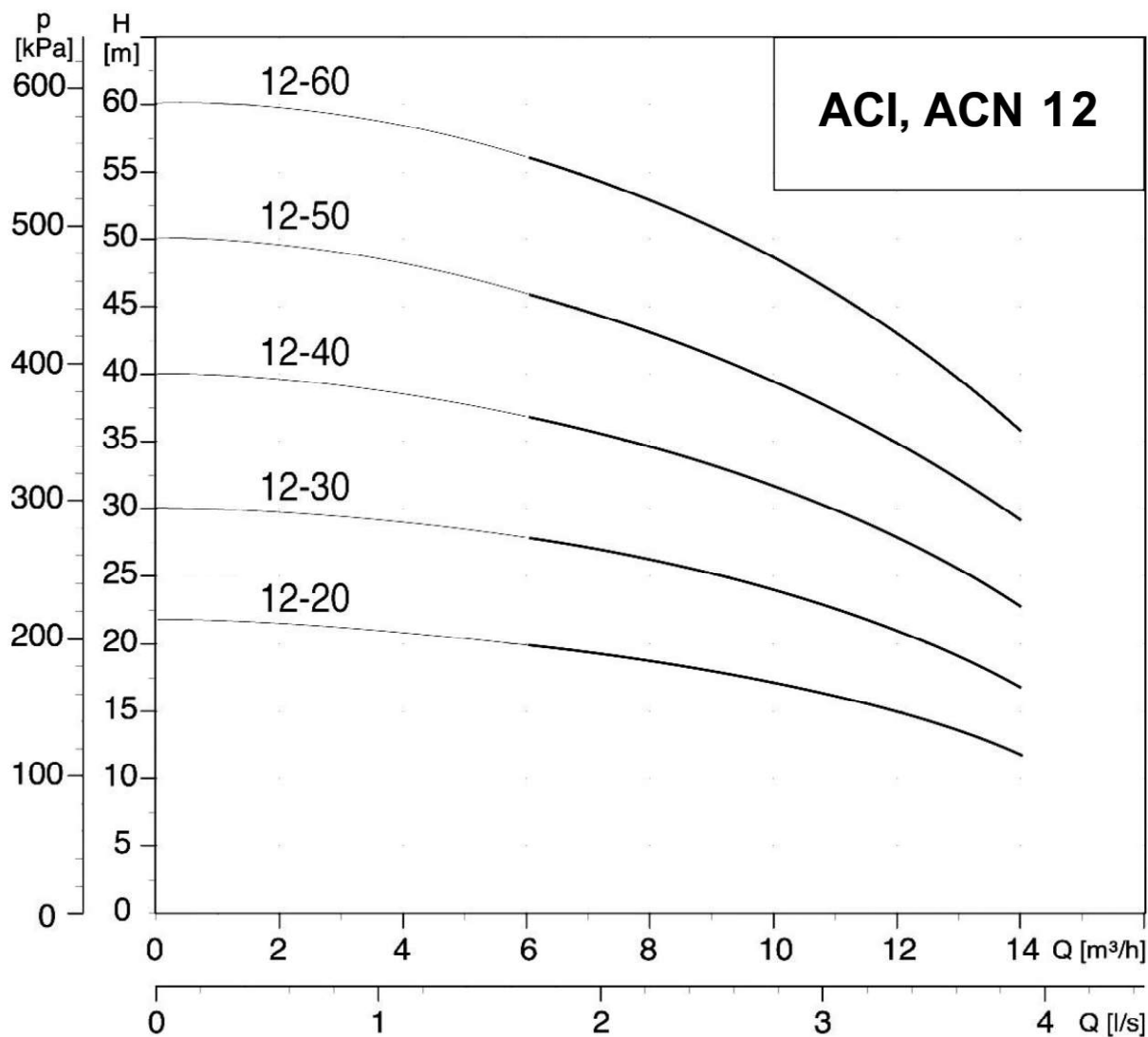
PERFORMANCE CURVES:



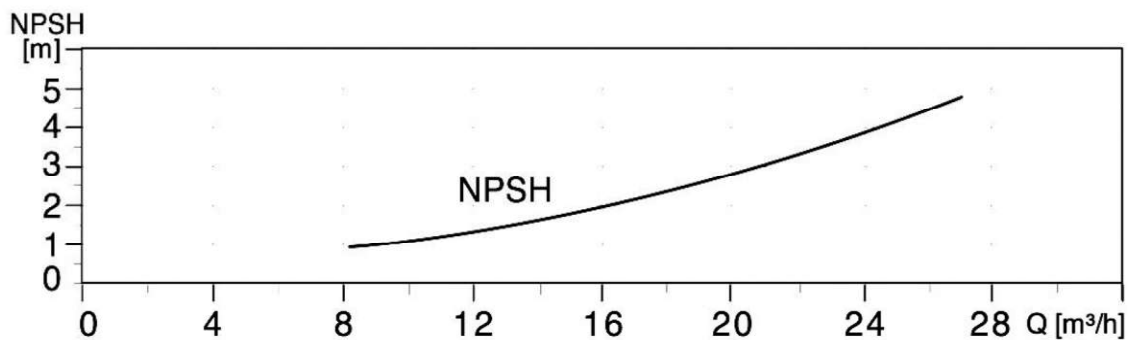
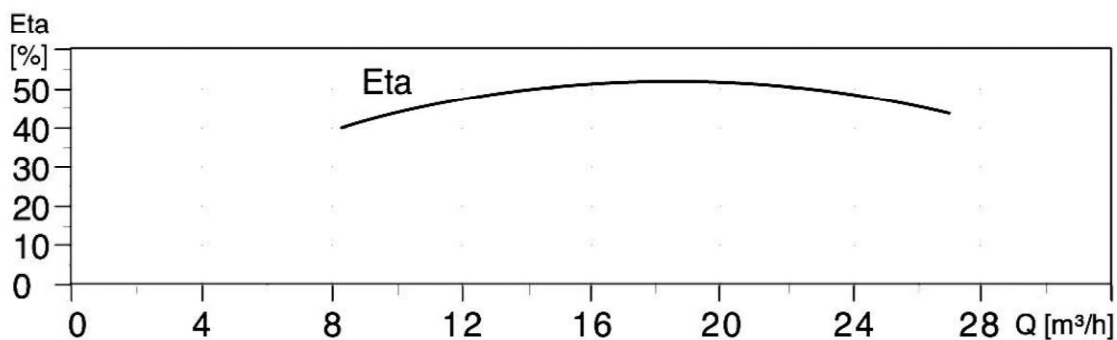
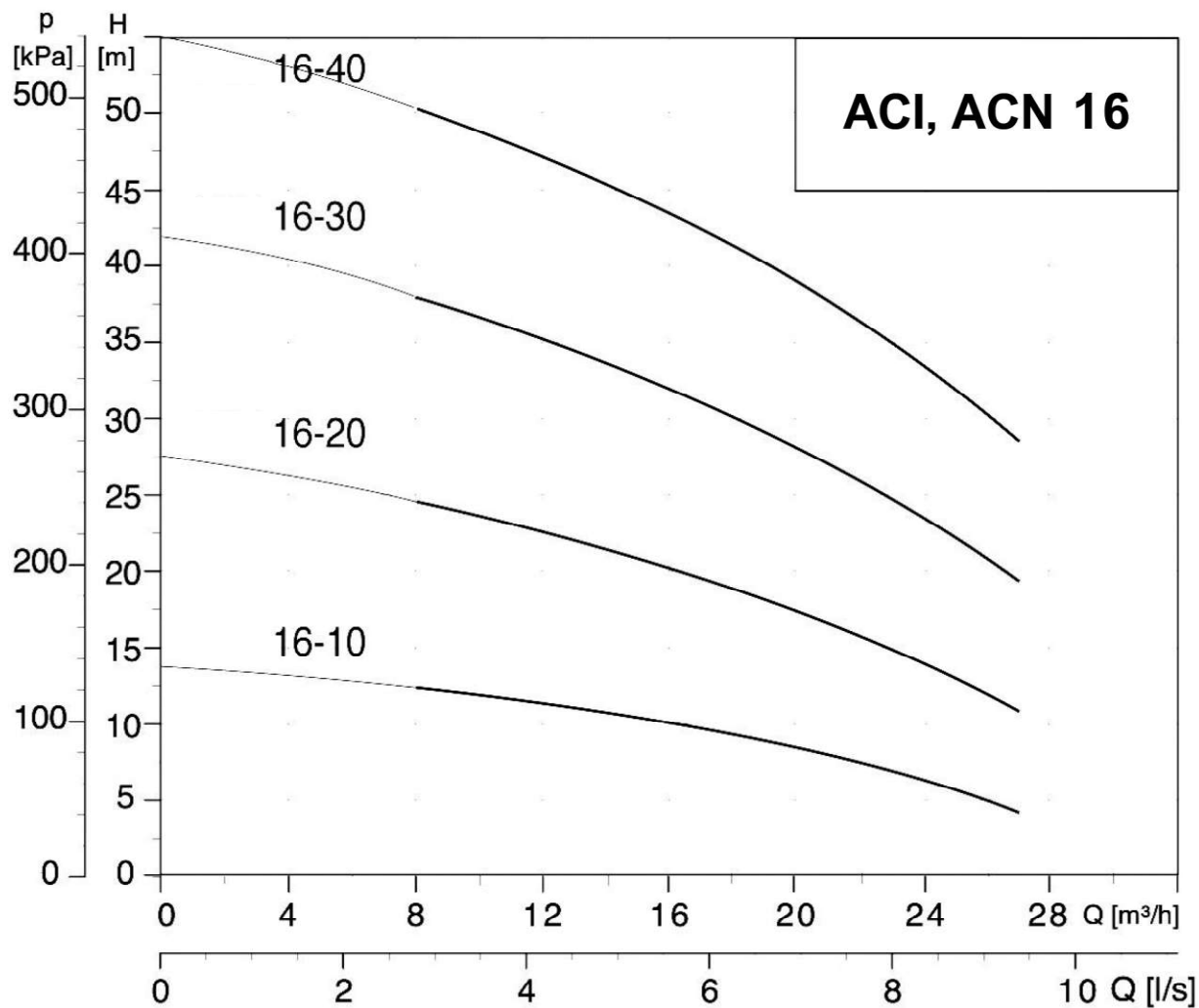
PERFORMANCE CURVES:



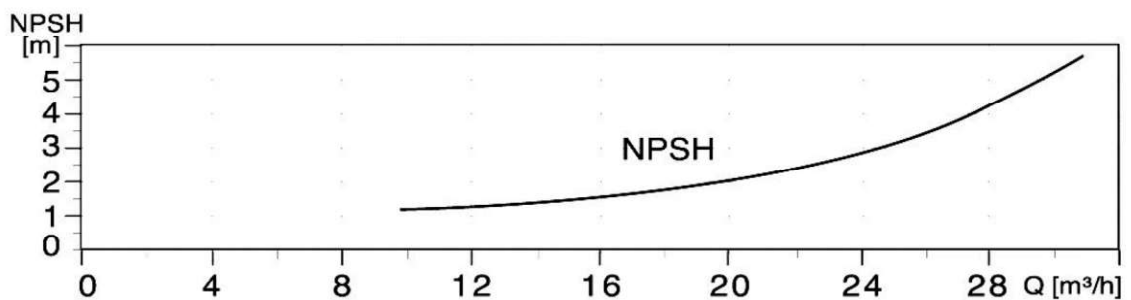
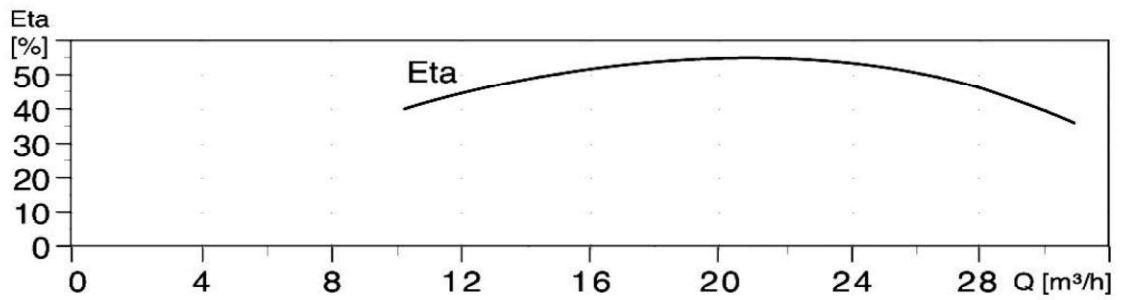
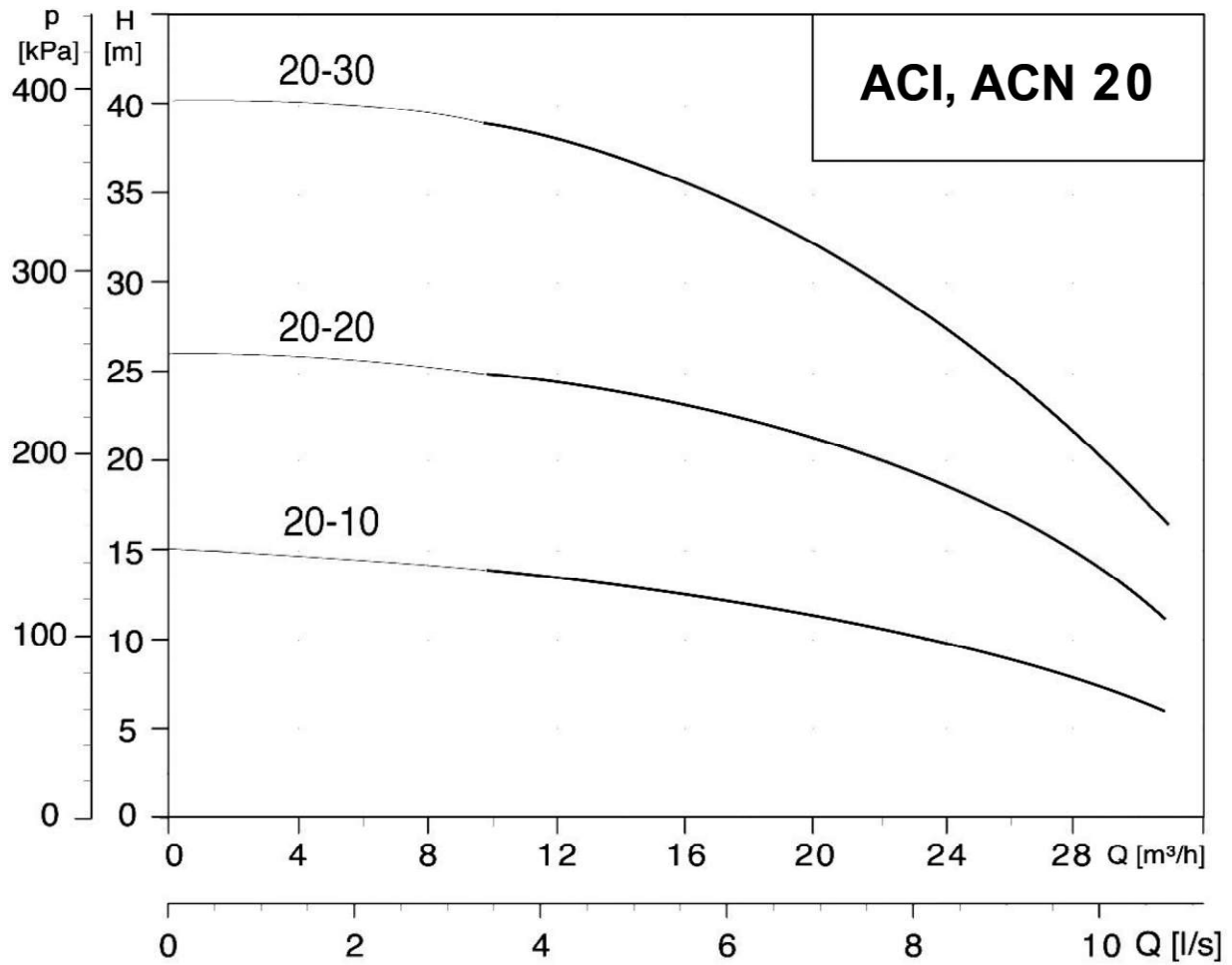
PERFORMANCE CURVES:



PERFORMANCE CURVES:

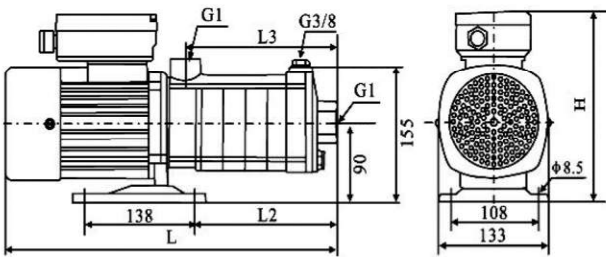


PERFORMANCE CURVES:



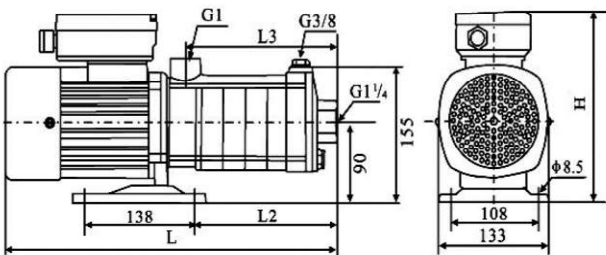
DIMENSIONS:

ACI, ACN 2



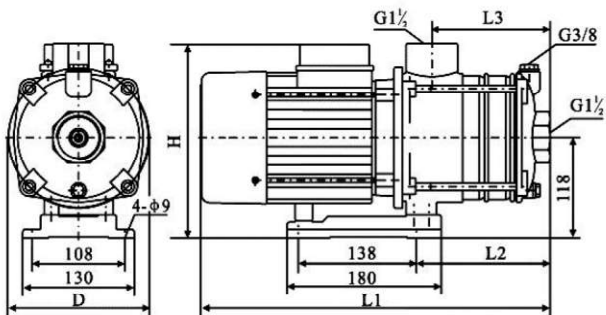
PUMP MODEL	DIMENSION (mm)								WEIGHT (kg)
	SINGLE PHASE				THREE PHASE				
	L	L2	L3	H	L	L2	L3	H	
2-20	326	90	100	210	326	90	100	190	8.5
2-30	344	108	118	210	344	108	118	190	9.0
2-40	362	126	136	210	362	126	136	190	9.5
2-50	380	144	154	210	380	144	154	190	9.5
2-60	398	162	172	210	398	162	172	190	10.5

ACI, ACN 4



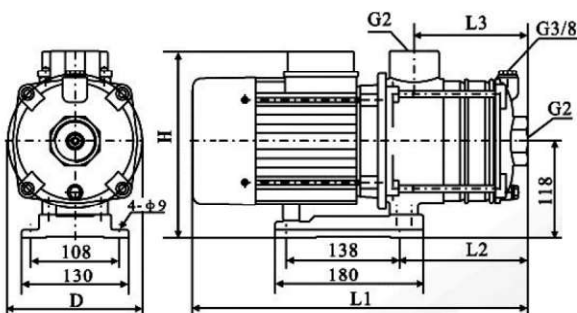
PUMP MODEL	DIMENSION (mm)								WEIGHT (kg)
	SINGLE PHASE				THREE PHASE				
	L	L2	L3	H	L	L2	L3	H	
4-20	335	99	109	210	335	99	109	190	9.0
4-30	362	126	136	210	362	126	136	190	10.0
4-40	389	153	163	210	389	153	163	190	10.5
4-50	416	180	190	210	416	180	190	190	11.0
4-60	443	207	217	210	443	207	217	190	12.0

ACI, ACN 8 / ACI, ACN 12



PUMP MODEL	DIMENSION (mm)										WEIGHT (kg)
	SINGLE PHASE					THREE PHASE					
	L1	L2	L3	H	D	L1	L2	L3	H	D	
8-20	316	96	78	244	165	316	96	78	218	165	12.0
8-30	346	126	108	244	165	346	126	108	218	165	14.0
8-40	346	126	108	244	165	346	126	108	218	165	17.0
8-50	412	156	138	254	165	412	156	138	228	165	19.0
8-60	450	156	138	260	176	412	156	138	228	165	24.0
8-70	480	186	168	261	176	442	186	168	228	165	25.0
8-80	480	186	168	261	176	442	186	168	228	165	26.0
12-20	316	96	78	244	165	316	96	78	218	165	13.0
12-30	412	126	108	254	165	412	126	108	228	165	15.0
12-40	420	126	108	261	176	412	126	108	228	165	23.0
12-50	420	156	138	261	176	412	156	138	228	165	25.0
12-60	-	-	-	-	-	468	156	138	235	176	27.0

ACI, ACN 16 / ACI, ACN 20



PUMP MODEL	DIMENSION (mm)										WEIGHT (kg)
	SINGLE PHASE					THREE PHASE					
	L1	L2	L3	H	D	L1	L2	L3	H	D	
16-10	316	96	78	244	165	316	96	78	218	165	12.0
16-20	346	126	108	244	165	346	126	108	218	165	14.0
16-30	346	126	108	244	165	346	126	108	218	165	17.0
16-40	412	156	138	254	165	412	156	138	228	165	19.0
20-10	376	106	81	254	165	376	106	81	228	165	14.0
20-20	444	151	126	261	176	406	151	126	228	165	24.0
20-30	-	-	-	-	-	507	196	171	235	176	28.0